



LABORATORY GROWN DIAMOND REPORT

April 6, 2026
 IGI Report Number **LG783601692**
 Description **LABORATORY GROWN DIAMOND**
 Shape and Cutting Style **PEAR BRILLIANT**
 Measurements **8.25 X 5.19 X 3.16 MM**

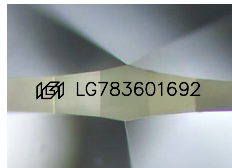
GRADING RESULTS

Carat Weight **0.79 CARAT**
 Color Grade **D**
 Clarity Grade **VVS 2**

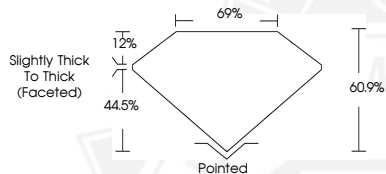
ADDITIONAL GRADING INFORMATION

Polish **VERY GOOD**
 Symmetry **GOOD**
 Fluorescence **NONE**
 Inscription(s) **IGI LG783601692**

Comments: This Laboratory Grown Diamond was created by Chemical Vapor Deposition (CVD) growth process. Type IIa



Sample Image Used



April 6, 2026
 IGI Report Number **LG783601692**
PEAR BRILLIANT
LABORATORY GROWN DIAMOND
8.25 X 5.19 X 3.16 MM
 Carat Weight **0.79 CARAT**
 Color Grade **D**
 Clarity Grade **VVS 2**
 Polish **VERY GOOD**
 Symmetry **GOOD**
 Fluorescence **NONE**
 Inscription(s) **IGI LG783601692**

Comments: This Laboratory Grown Diamond was created by Chemical Vapor Deposition (CVD) growth process. Type IIa



April 6, 2026
 IGI Report Number **LG783601692**
PEAR BRILLIANT
LABORATORY GROWN DIAMOND
8.25 X 5.19 X 3.16 MM
 Carat Weight **0.79 CARAT**
 Color Grade **D**
 Clarity Grade **VVS 2**
 Polish **VERY GOOD**
 Symmetry **GOOD**
 Fluorescence **NONE**
 Inscription(s) **IGI LG783601692**

Comments: This Laboratory Grown Diamond was created by Chemical Vapor Deposition (CVD) growth process. Type IIa



THIS DOCUMENT WAS PRODUCED WITH THE FOLLOWING SECURITY MEASURES: SPECIAL DOCUMENT PAPER, INK SCREENS, WATERMARK, BACKGROUND DESIGNS, HOLOGRAM AND OTHER SECURITY FEATURES NOT LISTED AND DO EXCEED DOCUMENT SECURITY INDUSTRY GUIDELINES.