



March 30, 2026

IGI Report Number LG783601543
**CUT CORNERED RECTANGULAR
MODIFIED BRILLIANT
LABORATORY GROWN DIAMOND**
5.53 X 3.97 X 2.70 MM

Carat Weight **0.52 CARAT**
Color Grade **E**
Clarity Grade **VS 1**
Polish **VERY GOOD**
Symmetry **VERY GOOD**
Fluorescence **NONE**
Inscription(s) **IGI LG783601543**

Comments: This Laboratory Grown Diamond was created by Chemical Vapor Deposition (CVD) growth process. Type IIa

LABORATORY GROWN DIAMOND REPORT

March 30, 2026

IGI Report Number

LG783601543

Description

LABORATORY GROWN DIAMOND

Shape and Cutting Style

**CUT CORNERED RECTANGULAR MODIFIED
BRILLIANT**

Measurements

5.53 X 3.97 X 2.70 MM

GRADING RESULTS

Carat Weight

0.52 CARAT

Color Grade

E

Clarity Grade

VS 1

ADDITIONAL GRADING INFORMATION

Polish

VERY GOOD

Symmetry

VERY GOOD

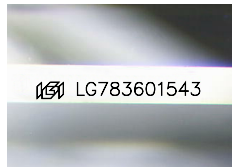
Fluorescence

NONE

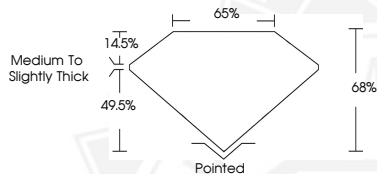
Inscription(s)

IGI LG783601543

Comments: This Laboratory Grown Diamond was created by Chemical Vapor Deposition (CVD) growth process. Type IIa



Sample Image Used



March 30, 2026

IGI Report Number LG783601543
**CUT CORNERED RECTANGULAR
MODIFIED BRILLIANT
LABORATORY GROWN DIAMOND**
5.53 X 3.97 X 2.70 MM

Carat Weight **0.52 CARAT**
Color Grade **E**
Clarity Grade **VS 1**
Polish **VERY GOOD**
Symmetry **VERY GOOD**
Fluorescence **NONE**
Inscription(s) **IGI LG783601543**

Comments: This Laboratory Grown Diamond was created by Chemical Vapor Deposition (CVD) growth process. Type IIa



THIS DOCUMENT WAS PRODUCED WITH THE FOLLOWING SECURITY MEASURES: SPECIAL DOCUMENT PAPER, INK SCREENS, WATERMARK, BACKGROUND DESIGNS, HOLOGRAM AND OTHER SECURITY FEATURES NOT LISTED AND DO EXCEED DOCUMENT SECURITY INDUSTRY GUIDELINES.