



**INTERNATIONAL
GEMOLOGICAL
INSTITUTE**

ELECTRONIC COPY

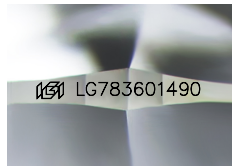


March 31, 2026

IGI Report Number LG783601490
ROUND BRILLIANT
LABORATORY GROWN DIAMOND
5.96 - 5.99 X 3.68 MM

LABORATORY GROWN DIAMOND REPORT

March 31, 2026
IGI Report Number **LG783601490**
Description **LABORATORY GROWN DIAMOND**
Shape and Cutting Style **ROUND BRILLIANT**
Measurements **5.96 - 5.99 X 3.68 MM**



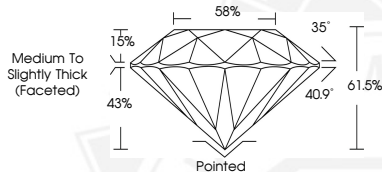
Sample Image Used

0.81 CARAT
E
VVS 2
IDEAL
EXCELLENT
EXCELLENT
NONE
IGI LG783601490

Comments: HEARTS & ARROWS This Laboratory Grown Diamond was created by Chemical Vapor Deposition (CVD) growth process. Type Ila

GRADING RESULTS

Carat Weight **0.81 CARAT**
Color Grade **E**
Clarity Grade **VVS 2**
Cut Grade **IDEAL**



ADDITIONAL GRADING INFORMATION

Polish **EXCELLENT**
Symmetry **EXCELLENT**
Fluorescence **NONE**
Inscription(s) **IGI LG783601490**

Comments: HEARTS & ARROWS
This Laboratory Grown Diamond was created by Chemical Vapor Deposition (CVD) growth process. Type Ila

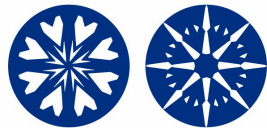


March 31, 2026

IGI Report Number LG783601490
ROUND BRILLIANT
LABORATORY GROWN DIAMOND
5.96 - 5.99 X 3.68 MM

0.81 CARAT
E
VVS 2
IDEAL
EXCELLENT
EXCELLENT
NONE
IGI LG783601490

Comments: HEARTS & ARROWS This Laboratory Grown Diamond was created by Chemical Vapor Deposition (CVD) growth process. Type Ila



HEARTS & ARROWS



THIS DOCUMENT WAS PRODUCED WITH THE FOLLOWING SECURITY MEASURES: SPECIAL DOCUMENT PAPER, INK SCREENS, WATERMARK, BACKGROUND DESIGNS, HOLOGRAM AND OTHER SECURITY FEATURES NOT LISTED AND DO EXCEED DOCUMENT SECURITY INDUSTRY GUIDELINES.

For terms & conditions and to verify this report, please visit www.igi.org