



March 26, 2026

IGI Report Number **LG783601408**

**PEAR BRILLIANT**

**LABORATORY GROWN DIAMOND**

**7.31 X 4.34 X 2.79 MM**

Carat Weight **0.53 CARAT**

Color Grade **D**

Clarity Grade **VVS 2**

Polish **VERY GOOD**

Symmetry **VERY GOOD**

Fluorescence **NONE**

Inscription(s) **IGI LG783601408**

Comments: This Laboratory Grown Diamond was created by Chemical Vapor Deposition (CVD) growth process. Type IIa

**LABORATORY GROWN DIAMOND REPORT**

March 26, 2026

IGI Report Number

**LG783601408**

Description

**LABORATORY GROWN DIAMOND**

Shape and Cutting Style

**PEAR BRILLIANT**

Measurements

**7.31 X 4.34 X 2.79 MM**

**GRADING RESULTS**

Carat Weight

**0.53 CARAT**

Color Grade

**D**

Clarity Grade

**VVS 2**

**ADDITIONAL GRADING INFORMATION**

Polish

**VERY GOOD**

Symmetry

**VERY GOOD**

Fluorescence

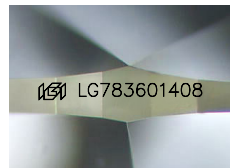
**NONE**

Inscription(s)

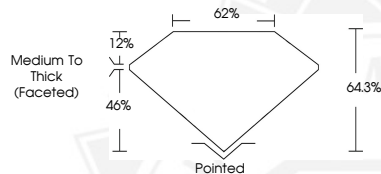
**IGI LG783601408**

Comments: This Laboratory Grown Diamond was created by Chemical Vapor Deposition (CVD) growth process.

Type IIa



Sample Image Used



March 26, 2026

IGI Report Number **LG783601408**

**PEAR BRILLIANT**

**LABORATORY GROWN DIAMOND**

**7.31 X 4.34 X 2.79 MM**

Carat Weight **0.53 CARAT**

Color Grade **D**

Clarity Grade **VVS 2**

Polish **VERY GOOD**

Symmetry **VERY GOOD**

Fluorescence **NONE**

Inscription(s) **IGI LG783601408**

Comments: This Laboratory Grown Diamond was created by Chemical Vapor Deposition (CVD) growth process. Type IIa



THIS DOCUMENT WAS PRODUCED WITH THE FOLLOWING SECURITY MEASURES: SPECIAL DOCUMENT PAPER, INK SCREENS, WATERMARK, BACKGROUND DESIGNS, HOLOGRAM AND OTHER SECURITY FEATURES NOT LISTED AND DO EXCEED DOCUMENT SECURITY INDUSTRY GUIDELINES.