



**INTERNATIONAL
GEMOLOGICAL
INSTITUTE**

ELECTRONIC COPY



March 24, 2026

IGI Report Number **LG783601239**

ROUND BRILLIANT

LABORATORY GROWN DIAMOND

5.85 - 5.87 X 3.63 MM

Carat Weight	0.79 CARAT
Color Grade	E
Clarity Grade	VS 2
Cut Grade	EXCELLENT
Polish	VERY GOOD
Symmetry	VERY GOOD
Fluorescence	NONE
Inscription(s)	IGI LG783601239

Comments: As Grown - No indication of post-growth treatment. This Laboratory Grown Diamond was created by High Pressure High Temperature (HPHT) growth process. Type II

LABORATORY GROWN DIAMOND REPORT

March 24, 2026

IGI Report Number

LG783601239

Description

LABORATORY GROWN DIAMOND

Shape and Cutting Style

ROUND BRILLIANT

Measurements

5.85 - 5.87 X 3.63 MM

GRADING RESULTS

Carat Weight

0.79 CARAT

Color Grade

E

Clarity Grade

VS 2

Cut Grade

EXCELLENT

ADDITIONAL GRADING INFORMATION

Polish

VERY GOOD

Symmetry

VERY GOOD

Fluorescence

NONE

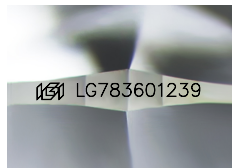
Inscription(s)

IGI LG783601239

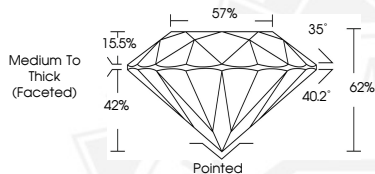
Comments: As Grown - No indication of post-growth treatment.

This Laboratory Grown Diamond was created by High Pressure High Temperature (HPHT) growth process.

Type II



Sample Image Used



March 24, 2026

IGI Report Number **LG783601239**

ROUND BRILLIANT

LABORATORY GROWN DIAMOND

5.85 - 5.87 X 3.63 MM

Carat Weight	0.79 CARAT
Color Grade	E
Clarity Grade	VS 2
Cut Grade	EXCELLENT
Polish	VERY GOOD
Symmetry	VERY GOOD
Fluorescence	NONE
Inscription(s)	IGI LG783601239

Comments: As Grown - No indication of post-growth treatment. This Laboratory Grown Diamond was created by High Pressure High Temperature (HPHT) growth process. Type II



THIS DOCUMENT WAS PRODUCED WITH THE FOLLOWING SECURITY MEASURES: SPECIAL DOCUMENT PAPER, INK SCREENS, WATERMARK, BACKGROUND DESIGNS, HOLOGRAM AND OTHER SECURITY FEATURES NOT LISTED AND DO EXCEED DOCUMENT SECURITY INDUSTRY GUIDELINES.

For terms & conditions and to verify this report, please visit www.igi.org