



**INTERNATIONAL
GEMOLOGICAL
INSTITUTE**

ELECTRONIC COPY



March 23, 2026

IGI Report Number **LG783601000**

**ROUND BRILLIANT
LABORATORY GROWN DIAMOND
4.85 - 4.87 X 3.00 MM**

Carat Weight	0.43 CARAT
Color Grade	D
Clarity Grade	VVS 2
Cut Grade	EXCELLENT
Polish	EXCELLENT
Symmetry	EXCELLENT
Fluorescence	NONE
Inscription(s)	IGI LG783601000

Comments: This Laboratory Grown Diamond was created by Chemical Vapor Deposition (CVD) growth process. Type IIa

LABORATORY GROWN DIAMOND REPORT

March 23, 2026
IGI Report Number **LG783601000**
Description **LABORATORY GROWN DIAMOND**
Shape and Cutting Style **ROUND BRILLIANT**
Measurements **4.85 - 4.87 X 3.00 MM**

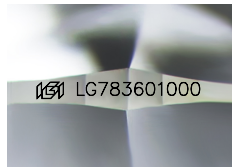
GRADING RESULTS

Carat Weight **0.43 CARAT**
Color Grade **D**
Clarity Grade **VVS 2**
Cut Grade **EXCELLENT**

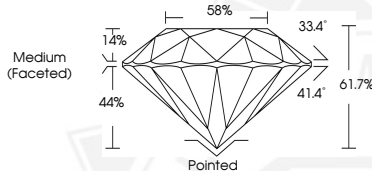
ADDITIONAL GRADING INFORMATION

Polish **EXCELLENT**
Symmetry **EXCELLENT**
Fluorescence **NONE**
Inscription(s) **IGI LG783601000**

Comments: This Laboratory Grown Diamond was created by Chemical Vapor Deposition (CVD) growth process. Type IIa



Sample Image Used



March 23, 2026

IGI Report Number **LG783601000**

**ROUND BRILLIANT
LABORATORY GROWN DIAMOND
4.85 - 4.87 X 3.00 MM**

Carat Weight	0.43 CARAT
Color Grade	D
Clarity Grade	VVS 2
Cut Grade	EXCELLENT
Polish	EXCELLENT
Symmetry	EXCELLENT
Fluorescence	NONE
Inscription(s)	IGI LG783601000

Comments: This Laboratory Grown Diamond was created by Chemical Vapor Deposition (CVD) growth process. Type IIa



THIS DOCUMENT WAS PRODUCED WITH THE FOLLOWING SECURITY MEASURES: SPECIAL DOCUMENT PAPER, INK SCREENS, WATERMARK, BACKGROUND DESIGNS, HOLOGRAM AND OTHER SECURITY FEATURES NOT LISTED AND DO EXCEED DOCUMENT SECURITY INDUSTRY GUIDELINES.

For terms & conditions and to verify this report, please visit www.igi.org