



March 20, 2026

IGI Report Number **LG782699951**

**ROUND BRILLIANT
LABORATORY GROWN DIAMOND
4.64 - 4.68 X 2.79 MM**

Carat Weight	0.37 CARAT
Color Grade	D
Clarity Grade	VS 1
Cut Grade	IDEAL
Polish	EXCELLENT
Symmetry	EXCELLENT
Fluorescence	NONE
Inscription(s)	IGI LG782699951

Comments: This Laboratory Grown Diamond was created by Chemical Vapor Deposition (CVD) growth process. Type IIa

LABORATORY GROWN DIAMOND REPORT

March 20, 2026
IGI Report Number **LG782699951**
Description **LABORATORY GROWN DIAMOND**
Shape and Cutting Style **ROUND BRILLIANT**
Measurements **4.64 - 4.68 X 2.79 MM**

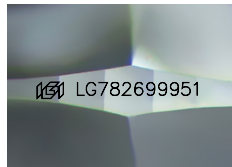
GRADING RESULTS

Carat Weight **0.37 CARAT**
Color Grade **D**
Clarity Grade **VS 1**
Cut Grade **IDEAL**

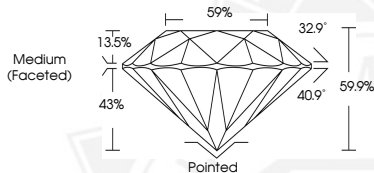
ADDITIONAL GRADING INFORMATION

Polish **EXCELLENT**
Symmetry **EXCELLENT**
Fluorescence **NONE**
Inscription(s) **IGI LG782699951**

Comments: This Laboratory Grown Diamond was created by Chemical Vapor Deposition (CVD) growth process. Type IIa



Sample Image Used



March 20, 2026

IGI Report Number **LG782699951**

**ROUND BRILLIANT
LABORATORY GROWN DIAMOND
4.64 - 4.68 X 2.79 MM**

Carat Weight	0.37 CARAT
Color Grade	D
Clarity Grade	VS 1
Cut Grade	IDEAL
Polish	EXCELLENT
Symmetry	EXCELLENT
Fluorescence	NONE
Inscription(s)	IGI LG782699951

Comments: This Laboratory Grown Diamond was created by Chemical Vapor Deposition (CVD) growth process. Type IIa



THIS DOCUMENT WAS PRODUCED WITH THE FOLLOWING SECURITY MEASURES: SPECIAL DOCUMENT PAPER, INK SCREENS, WATERMARK, BACKGROUND DESIGNS, HOLOGRAM AND OTHER SECURITY FEATURES NOT LISTED AND DO EXCEED DOCUMENT SECURITY INDUSTRY GUIDELINES.