



ELECTRONIC COPY

LG782695398
Report verification at igi.org



March 14, 2026

IGI Report Number **LG782695398**

Description **LABORATORY GROWN DIAMOND**

Shape and Cutting Style **OVAL BRILLIANT**

Measurements **8.15 X 5.86 X 3.56 MM**

GRADING RESULTS

Carat Weight **1.04 CARAT**

Color Grade **G**

Clarity Grade **VVS 2**

March 14, 2026
IGI Report Number **LG782695398**
Description **LABORATORY GROWN DIAMOND**
Shape and Cutting Style **OVAL BRILLIANT**
Measurements **8.15 X 5.86 X 3.56 MM**

GRADING RESULTS

Carat Weight **1.04 CARAT**

Color Grade **G**

Clarity Grade **VVS 2**

ADDITIONAL GRADING INFORMATION

Polish **EXCELLENT**

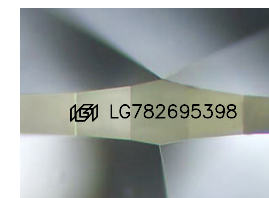
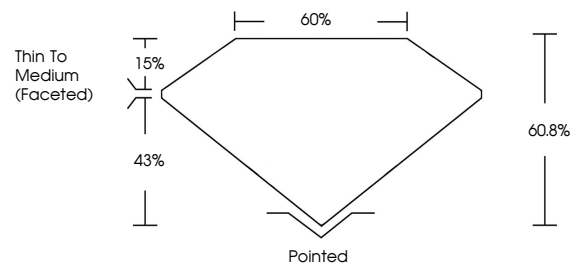
Symmetry **EXCELLENT**

Fluorescence **NONE**

Inscription(s) **IGI LG782695398**

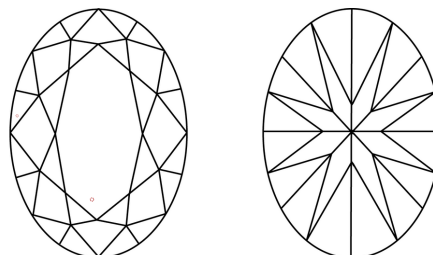
Comments: This Laboratory Grown Diamond was created by Chemical Vapor Deposition (CVD) growth process. Type IIa

PROPORTIONS



Sample Image Used

CLARITY CHARACTERISTICS



KEY TO SYMBOLS

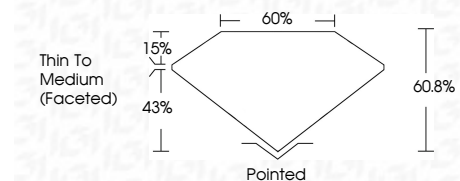
Red symbols indicate internal characteristics.
Green symbols indicate external characteristics.

COLOR

D E F G H I J Faint Very Light Light

CLARITY

FL	IF	VVS ¹⁻²	VS ¹⁻²	SI ¹⁻²	I ¹⁻³
Flawless	Internally Flawless	Very Very Slightly Included	Very Slightly Included	Slightly Included	Included



ADDITIONAL GRADING INFORMATION

Polish **EXCELLENT**

Symmetry **EXCELLENT**

Fluorescence **NONE**

Inscription(s) **IGI LG782695398**

Comments: This Laboratory Grown Diamond was created by Chemical Vapor Deposition (CVD) growth process. Type IIa



IGI



March 14, 2026
IGI Report No LG782695398
OVAL BRILLIANT
8.15 X 5.86 X 3.56 MM
1.04 CARAT
Color Grade G
Clarity Grade VVS 2
Depth 60.8%
Table 60%
Girdle Thin To Medium (Faceted)
Culet Pointed
Polish EXCELLENT
Symmetry EXCELLENT
Fluorescence NONE
Inscription(s) IGI LG782695398

Comments: This Laboratory Grown Diamond was created by Chemical Vapor Deposition (CVD) growth process. Type IIa