



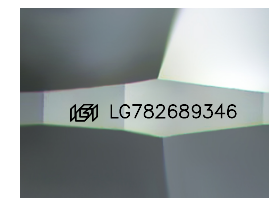
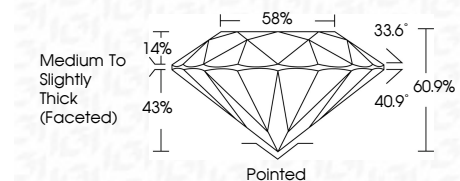
ELECTRONIC COPY

LG782689346 Report verification at igi.org



March 12, 2026 IGI Report Number LG782689346 Description LABORATORY GROWN DIAMOND Shape and Cutting Style ROUND BRILLIANT Measurements 9.42 - 9.47 X 5.75 MM

GRADING RESULTS Carat Weight 3.14 CARATS Color Grade D Clarity Grade VVS 1 Cut Grade IDEAL



Sample Image Used

ADDITIONAL GRADING INFORMATION Polish EXCELLENT Symmetry EXCELLENT Fluorescence NONE Inscription(s) LG782689346 Comments: HEARTS & ARROWS As Grown - No indication of post-growth treatment. This Laboratory Grown Diamond was created by High Pressure High Temperature (HPHT) growth process. Type II



March 12, 2026 IGI Report No LG782689346 ROUND BRILLIANT 3.14 CARATS D VVS 1 IDEAL 60.9% 58% Medium To Slightly Thick (Faceted) Pointed EXCELLENT EXCELLENT NONE NONE LG782689346 Comments: HEARTS & ARROWS As Grown - No indication of post-growth treatment. This Laboratory Grown Diamond was created by High Pressure High Temperature (HPHT) growth process. Type II

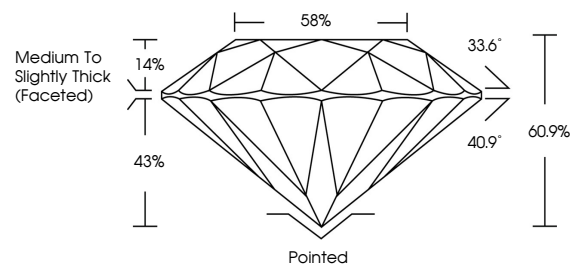
March 12, 2026 IGI Report Number LG782689346 Description LABORATORY GROWN DIAMOND Shape and Cutting Style ROUND BRILLIANT Measurements 9.42 - 9.47 X 5.75 MM

GRADING RESULTS Carat Weight 3.14 CARATS Color Grade D Clarity Grade VVS 1 Cut Grade IDEAL

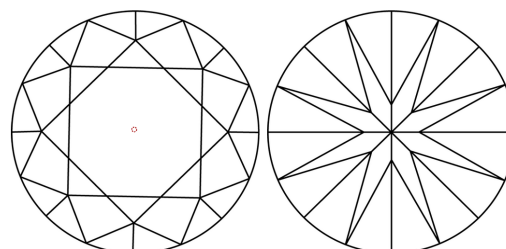
ADDITIONAL GRADING INFORMATION Polish EXCELLENT Symmetry EXCELLENT Fluorescence NONE Inscription(s) LG782689346

Comments: HEARTS & ARROWS As Grown - No indication of post-growth treatment. This Laboratory Grown Diamond was created by High Pressure High Temperature (HPHT) growth process. Type II

PROPORTIONS



CLARITY CHARACTERISTICS



KEY TO SYMBOLS

Red symbols indicate internal characteristics. Green symbols indicate external characteristics.



COLOR

D E F G H I J Faint Very Light Light

CLARITY

Table with columns: FL, IF, VS 1-2, VS 1-2, SI 1-2, I 1-3 and rows: Flawless, Internally Flawless, Very Very Slightly Included, Very Slightly Included, Slightly Included, Included

