



**LABORATORY GROWN DIAMOND REPORT**

March 17, 2026  
 IGI Report Number **LG782689334**  
 Description **LABORATORY GROWN DIAMOND**  
 Shape and Cutting Style **ROUND BRILLIANT**  
 Measurements **5.32 - 5.36 X 3.24 MM**

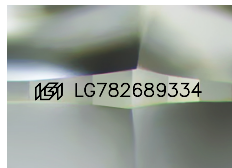
**GRADING RESULTS**

Carat Weight **0.56 CARAT**  
 Color Grade **D**  
 Clarity Grade **INTERNALLY FLAWLESS**  
 Cut Grade **IDEAL**

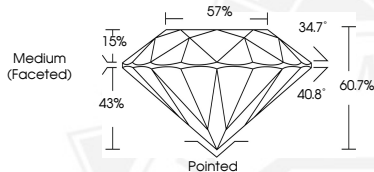
**ADDITIONAL GRADING INFORMATION**

Polish **EXCELLENT**  
 Symmetry **EXCELLENT**  
 Fluorescence **NONE**  
 Inscription(s) **IGI LG782689334**

Comments: HEARTS & ARROWS  
 As Grown - No indication of post-growth treatment.  
 This Laboratory Grown Diamond was created by High Pressure High  
 Temperature (HPHT) growth process.  
 Type II



Sample Image Used



HEARTS & ARROWS



March 17, 2026  
 IGI Report Number **LG782689334**  
**ROUND BRILLIANT**  
**LABORATORY GROWN DIAMOND**  
**5.32 - 5.36 X 3.24 MM**  
 Carat Weight **0.56 CARAT**  
 Color Grade **D**  
 Clarity Grade **I.F.**  
 Cut Grade **IDEAL**  
 Polish **EXCELLENT**  
 Symmetry **EXCELLENT**  
 Fluorescence **NONE**  
 Inscription(s) **IGI LG782689334**

Comments: HEARTS & ARROWS As  
 Grown - No indication of post-  
 growth treatment. This Laboratory  
 Grown Diamond was created by  
 High Pressure High Temperature  
 (HPHT) growth process. Type II



March 17, 2026  
 IGI Report Number **LG782689334**  
**ROUND BRILLIANT**  
**LABORATORY GROWN DIAMOND**  
**5.32 - 5.36 X 3.24 MM**  
 Carat Weight **0.56 CARAT**  
 Color Grade **D**  
 Clarity Grade **I.F.**  
 Cut Grade **IDEAL**  
 Polish **EXCELLENT**  
 Symmetry **EXCELLENT**  
 Fluorescence **NONE**  
 Inscription(s) **IGI LG782689334**

Comments: HEARTS & ARROWS As  
 Grown - No indication of post-  
 growth treatment. This Laboratory  
 Grown Diamond was created by  
 High Pressure High Temperature  
 (HPHT) growth process. Type II

THIS DOCUMENT WAS PRODUCED WITH THE FOLLOWING SECURITY MEASURES: SPECIAL DOCUMENT PAPER, INK SCREENS, WATERMARK, BACKGROUND DESIGNS, HOLOGRAM AND OTHER SECURITY FEATURES NOT LISTED AND DO EXCEED DOCUMENT SECURITY INDUSTRY GUIDELINES.