



ELECTRONIC COPY

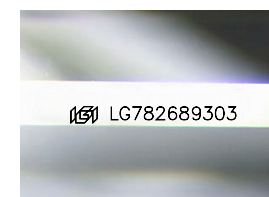
LG782689303
Report verification at igi.org



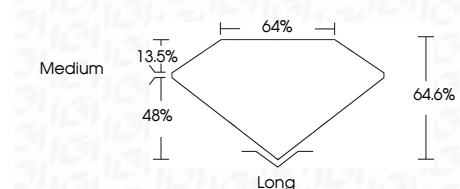
March 14, 2026
IGI Report Number **LG782689303**
Description **LABORATORY GROWN DIAMOND**
Shape and Cutting Style **EMERALD CUT**
Measurements **10.58 X 7.20 X 4.65 MM**

GRADING RESULTS

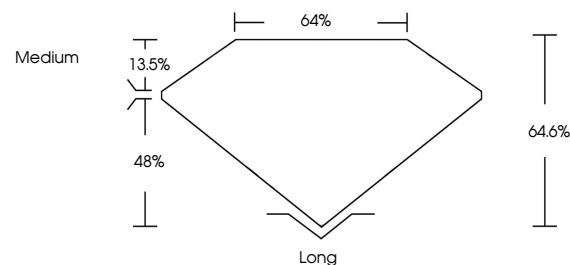
Carat Weight **3.54 CARATS**
Color Grade **E**
Clarity Grade **VVS 1**



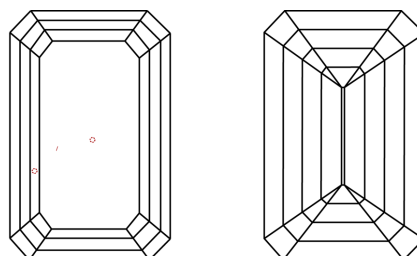
Sample Image Used



PROPORTIONS



CLARITY CHARACTERISTICS



KEY TO SYMBOLS

Red symbols indicate internal characteristics.
Green symbols indicate external characteristics.

COLOR

D E F G H I J Faint Very Light Light

CLARITY

FL	IF	VVS ¹⁻²	VS ¹⁻²	SI ¹⁻²	I ¹⁻³
Flawless	Internally Flawless	Very Very Slightly Included	Very Slightly Included	Slightly Included	Included

ADDITIONAL GRADING INFORMATION

Polish **EXCELLENT**
Symmetry **EXCELLENT**
Fluorescence **NONE**
Inscription(s) **IGI LG782689303**
Comments: As Grown - No indication of post-growth treatment.
This Laboratory Grown Diamond was created by High Pressure High Temperature (HPHT) growth process.
Type II



March 14, 2026
IGI Report No LG782689303
EMERALD CUT
10.58 X 7.20 X 4.65 MM
3.54 CARATS
E
VVS 1
64.6%
48%
Medium
Long
EXCELLENT
EXCELLENT
NONE
IGI LG782689303
Comments: As Grown - No indication of post-growth treatment.
This Laboratory Grown Diamond was created by High Pressure High Temperature (HPHT) growth process.
Type II