



**ELECTRONIC COPY**

LG782689228  
Report verification at igi.org



March 21, 2026  
IGI Report Number **LG782689228**  
Description **LABORATORY GROWN DIAMOND**  
Shape and Cutting Style **CUT CORNERED  
RECTANGULAR MIXED CUT**  
Measurements **11.00 X 7.41 X 4.60 MM**  
**GRADING RESULTS**  
Carat Weight **3.44 CARATS**  
Color Grade **FANCY VIVID RED**  
Clarity Grade **VS 1**

**LABORATORY GROWN DIAMOND REPORT**

March 21, 2026  
IGI Report Number **LG782689228**  
Description **LABORATORY GROWN DIAMOND**  
Shape and Cutting Style **CUT CORNERED RECTANGULAR  
MIXED CUT**  
Measurements **11.00 X 7.41 X 4.60 MM**

**GRADING RESULTS**

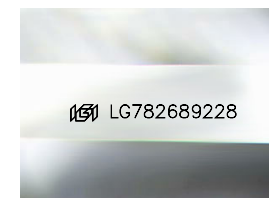
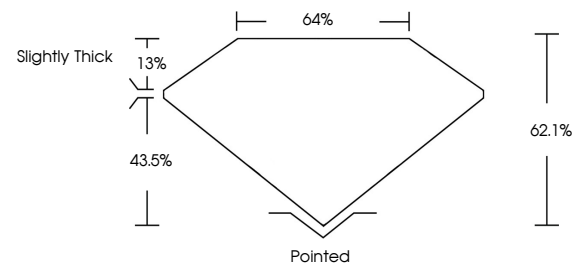
Carat Weight **3.44 CARATS**  
Color Grade **FANCY VIVID RED**  
Clarity Grade **VS 1**

**ADDITIONAL GRADING INFORMATION**

Polish **EXCELLENT**  
Symmetry **VERY GOOD**  
Fluorescence **SLIGHT**  
Inscription(s) **IGI LG782689228**

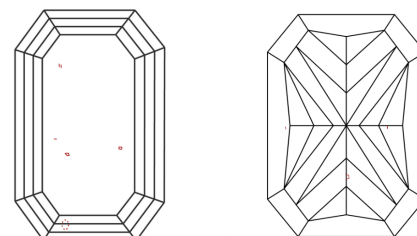
Comments: This Laboratory Grown Diamond was created by Chemical Vapor Deposition (CVD) growth process.  
Indications of post-growth treatment.

**PROPORTIONS**



Sample Image Used

**CLARITY CHARACTERISTICS**



**KEY TO SYMBOLS**

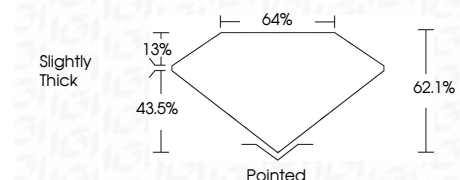
Red symbols indicate internal characteristics.  
Green symbols indicate external characteristics.

**COLOR**

D E F G H I J Faint Very Light Light

**CLARITY**

FL	IF	VS <sup>1-2</sup>	VS <sup>1-2</sup>	SI <sup>1-2</sup>	I <sup>1-3</sup>
Flawless	Internally Flawless	Very Very Slightly Included	Very Slightly Included	Slightly Included	Included



**ADDITIONAL GRADING INFORMATION**

Polish **EXCELLENT**  
Symmetry **VERY GOOD**  
Fluorescence **SLIGHT**  
Inscription(s) **IGI LG782689228**  
Comments: This Laboratory Grown Diamond was created by Chemical Vapor Deposition (CVD) growth process.  
Indications of post-growth treatment.



March 21, 2026  
IGI Report No LG782689228  
CUT CORNERED RECT. MIXED CUT  
11.00 X 7.41 X 4.60 MM  
3.44 CARATS  
FANCY VIVID RED  
VS 1  
62.1%  
43.5%  
Slightly Thick  
Pointed  
EXCELLENT  
VERY GOOD  
SLIGHT  
IGI LG782689228  
Comments: This Laboratory Grown Diamond was created by Chemical Vapor Deposition (CVD) growth process.  
Indications of post-growth treatment.