



March 14, 2026

IGI Report Number **LG782688941**

**OVAL BRILLIANT
LABORATORY GROWN DIAMOND
7.33 X 4.97 X 3.10 MM**

Carat Weight	0.71 CARAT
Color Grade	D
Clarity Grade	I.F.
Polish	EXCELLENT
Symmetry	EXCELLENT
Fluorescence	NONE
Inscription(s)	IGI LG782688941

Comments: As Grown - No indication of post-growth treatment. This Laboratory Grown Diamond was created by High Pressure High Temperature (HPHT) growth process. Type II

LABORATORY GROWN DIAMOND REPORT

March 14, 2026

IGI Report Number **LG782688941**

Description **LABORATORY GROWN DIAMOND**

Shape and Cutting Style **OVAL BRILLIANT**

Measurements **7.33 X 4.97 X 3.10 MM**

GRADING RESULTS

Carat Weight **0.71 CARAT**

Color Grade **D**

Clarity Grade **INTERNALLY FLAWLESS**

ADDITIONAL GRADING INFORMATION

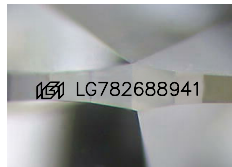
Polish **EXCELLENT**

Symmetry **EXCELLENT**

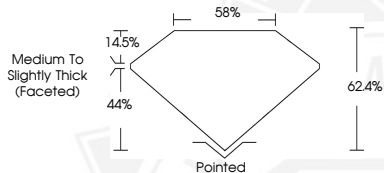
Fluorescence **NONE**

Inscription(s) **IGI LG782688941**

Comments: As Grown - No indication of post-growth treatment. This Laboratory Grown Diamond was created by High Pressure High Temperature (HPHT) growth process. Type II



Sample Image Used



March 14, 2026

IGI Report Number **LG782688941**

**OVAL BRILLIANT
LABORATORY GROWN DIAMOND
7.33 X 4.97 X 3.10 MM**

Carat Weight	0.71 CARAT
Color Grade	D
Clarity Grade	I.F.
Polish	EXCELLENT
Symmetry	EXCELLENT
Fluorescence	NONE
Inscription(s)	IGI LG782688941

Comments: As Grown - No indication of post-growth treatment. This Laboratory Grown Diamond was created by High Pressure High Temperature (HPHT) growth process. Type II



THIS DOCUMENT WAS PRODUCED WITH THE FOLLOWING SECURITY MEASURES: SPECIAL DOCUMENT PAPER, INK SCREENS, WATERMARK, BACKGROUND DESIGNS, HOLOGRAM AND OTHER SECURITY FEATURES NOT LISTED AND DO EXCEED DOCUMENT SECURITY INDUSTRY GUIDELINES.