



**INTERNATIONAL
GEMOLOGICAL
INSTITUTE**

LABORATORY GROWN DIAMOND REPORT

March 16, 2026
 IGI Report Number **LG782685352**
 Description **LABORATORY GROWN DIAMOND**
 Shape and Cutting Style **CUSHION MODIFIED BRILLIANT**
 Measurements **6.45 X 5.30 X 3.44 MM**

GRADING RESULTS

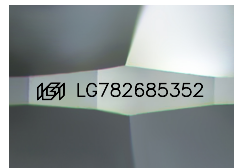
Carat Weight **0.85 CARAT**
 Color Grade **E**
 Clarity Grade **VVS 2**
 Cut Grade **EXCELLENT**

ADDITIONAL GRADING INFORMATION

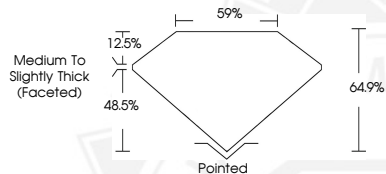
Polish **EXCELLENT**
 Symmetry **EXCELLENT**
 Fluorescence **NONE**
 Inscription(s) **IGI LG782685352**

Comments: As Grown - No indication of post-growth treatment. This Laboratory Grown Diamond was created by High Pressure High Temperature (HPHT) growth process. Type II

ELECTRONIC COPY



Sample Image Used



March 16, 2026
 IGI Report Number **LG782685352**
 CUSHION MODIFIED BRILLIANT
 LABORATORY GROWN DIAMOND
6.45 X 5.30 X 3.44 MM
 Carat Weight **0.85 CARAT**
 Color Grade **E**
 Clarity Grade **VVS 2**
 Cut Grade **EXCELLENT**
 Polish **EXCELLENT**
 Symmetry **EXCELLENT**
 Fluorescence **NONE**
 Inscription(s) **IGI LG782685352**

Comments: As Grown - No indication of post-growth treatment. This Laboratory Grown Diamond was created by High Pressure High Temperature (HPHT) growth process. Type II



March 16, 2026
 IGI Report Number **LG782685352**
 CUSHION MODIFIED BRILLIANT
 LABORATORY GROWN DIAMOND
6.45 X 5.30 X 3.44 MM
 Carat Weight **0.85 CARAT**
 Color Grade **E**
 Clarity Grade **VVS 2**
 Cut Grade **EXCELLENT**
 Polish **EXCELLENT**
 Symmetry **EXCELLENT**
 Fluorescence **NONE**
 Inscription(s) **IGI LG782685352**

Comments: As Grown - No indication of post-growth treatment. This Laboratory Grown Diamond was created by High Pressure High Temperature (HPHT) growth process. Type II



THIS DOCUMENT WAS PRODUCED WITH THE FOLLOWING SECURITY MEASURES: SPECIAL DOCUMENT PAPER, INK SCREENS, WATERMARK, BACKGROUND DESIGNS, HOLOGRAM AND OTHER SECURITY FEATURES NOT LISTED AND DO EXCEED DOCUMENT SECURITY INDUSTRY GUIDELINES.

For terms & conditions and to verify this report, please visit www.igi.org