



ELECTRONIC COPY

LG782666510
Report verification at igi.org



March 17, 2026
IGI Report Number **LG782666510**
Description **LABORATORY GROWN DIAMOND**
Shape and Cutting Style **MODIFIED OCTAGONAL STEP CUT**
Measurements **12.22 X 7.26 X 3.56 MM**
GRADING RESULTS
Carat Weight **2.20 CARATS**
Color Grade **D**
Clarity Grade **VS 1**

March 17, 2026
IGI Report Number **LG782666510**
Description **LABORATORY GROWN DIAMOND**
Shape and Cutting Style **MODIFIED OCTAGONAL STEP CUT**
Measurements **12.22 X 7.26 X 3.56 MM**

GRADING RESULTS

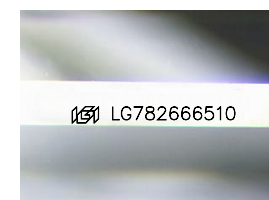
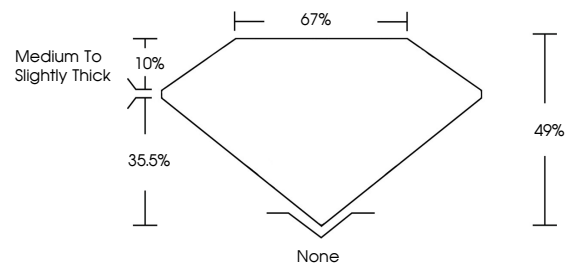
Carat Weight **2.20 CARATS**
Color Grade **D**
Clarity Grade **VS 1**

ADDITIONAL GRADING INFORMATION

Polish **EXCELLENT**
Symmetry **EXCELLENT**
Fluorescence **NONE**
Inscription(s) **IGI LG782666510**

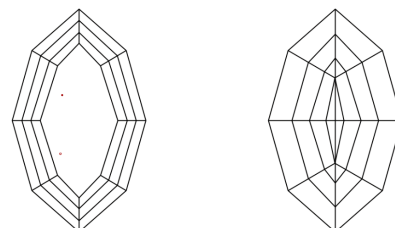
Comments: This Laboratory Grown Diamond was created by Chemical Vapor Deposition (CVD) growth process.
Type IIa

PROPORTIONS



Sample Image Used

CLARITY CHARACTERISTICS



KEY TO SYMBOLS

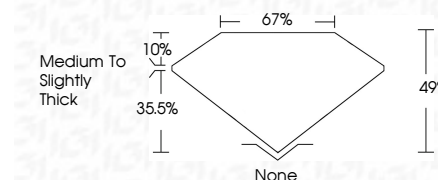
Red symbols indicate internal characteristics.
Green symbols indicate external characteristics.

COLOR

D E F G H I J Faint Very Light Light

CLARITY

FL	IF	VS ¹⁻²	VS ¹⁻²	SI ¹⁻²	I ¹⁻³
Flawless	Internally Flawless	Very Very Slightly Included	Very Slightly Included	Slightly Included	Included



ADDITIONAL GRADING INFORMATION

Polish **EXCELLENT**
Symmetry **EXCELLENT**
Fluorescence **NONE**
Inscription(s) **IGI LG782666510**
Comments: This Laboratory Grown Diamond was created by Chemical Vapor Deposition (CVD) growth process.
Type IIa



IGI



March 17, 2026
IGI Report No **LG782666510**
MODIFIED OCTAGONAL STEP CUT
2.20 CARATS
D
2.20 CARATS
Color Grade **D**
Clarity Grade **VS 1**
Depth **49%**
Table **67%**
Girdle **Medium to Slightly Thick**
Culet **None**
Polish **EXCELLENT**
Symmetry **EXCELLENT**
Fluorescence **NONE**
Inscription(s) **IGI LG782666510**

Comments: This Laboratory Grown Diamond was created by Chemical Vapor Deposition (CVD) growth process.
Type IIa