



April 2, 2026

IGI Report Number **LG782654472**

**HEART BRILLIANT
LABORATORY GROWN DIAMOND**

5.70 X 6.50 X 3.78 MM

Carat Weight	0.84 CARAT
Color Grade	D
Clarity Grade	VVS 1
Polish	VERY GOOD
Symmetry	VERY GOOD
Fluorescence	NONE
Inscription(s)	IGI LG782654472

Comments: As Grown - No indication of post-growth treatment. This Laboratory Grown Diamond was created by High Pressure High Temperature (HPHT) growth process. Type II

LABORATORY GROWN DIAMOND REPORT

April 2, 2026	
IGI Report Number	LG782654472
Description	LABORATORY GROWN DIAMOND
Shape and Cutting Style	HEART BRILLIANT
Measurements	5.70 X 6.50 X 3.78 MM

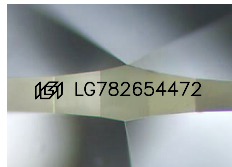
GRADING RESULTS

Carat Weight	0.84 CARAT
Color Grade	D
Clarity Grade	VVS 1

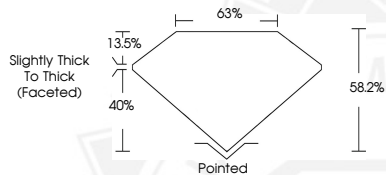
ADDITIONAL GRADING INFORMATION

Polish	VERY GOOD
Symmetry	VERY GOOD
Fluorescence	NONE
Inscription(s)	IGI LG782654472

Comments: As Grown - No indication of post-growth treatment. This Laboratory Grown Diamond was created by High Pressure High Temperature (HPHT) growth process. Type II



Sample Image Used



April 2, 2026

IGI Report Number **LG782654472**

**HEART BRILLIANT
LABORATORY GROWN DIAMOND**

5.70 X 6.50 X 3.78 MM

Carat Weight	0.84 CARAT
Color Grade	D
Clarity Grade	VVS 1
Polish	VERY GOOD
Symmetry	VERY GOOD
Fluorescence	NONE
Inscription(s)	IGI LG782654472

Comments: As Grown - No indication of post-growth treatment. This Laboratory Grown Diamond was created by High Pressure High Temperature (HPHT) growth process. Type II



THIS DOCUMENT WAS PRODUCED WITH THE FOLLOWING SECURITY MEASURES: SPECIAL DOCUMENT PAPER, INK SCREENS, WATERMARK, BACKGROUND DESIGNS, HOLOGRAM AND OTHER SECURITY FEATURES NOT LISTED AND DO EXCEED DOCUMENT SECURITY INDUSTRY GUIDELINES.