



**INTERNATIONAL  
GEMOLOGICAL  
INSTITUTE**

**ELECTRONIC COPY**



March 30, 2026

IGI Report Number **LG782654428**

**ROUND BRILLIANT  
LABORATORY GROWN DIAMOND  
6.43 - 6.47 X 3.90 MM**

Carat Weight **0.99 CARAT**  
Color Grade **FANCY INTENSE**

Clarity Grade **VS 1**  
Cut Grade **IDEAL**

Polish **EXCELLENT**  
Symmetry **EXCELLENT**

Fluorescence **SLIGHT**  
Inscription(s) **IGI LG782654428**

Comments: This Laboratory Grown Diamond was created by Chemical Vapor Deposition (CVD) growth process. Indications of post-growth treatment.

**LABORATORY GROWN DIAMOND REPORT**

March 30, 2026

IGI Report Number

**LG782654428**

Description

**LABORATORY GROWN DIAMOND**

Shape and Cutting Style

**ROUND BRILLIANT**

Measurements

**6.43 - 6.47 X 3.90 MM**

**GRADING RESULTS**

Carat Weight

**0.99 CARAT**

Color Grade

**FANCY INTENSE PINK**

Clarity Grade

**VS 1**

Cut Grade

**IDEAL**

**ADDITIONAL GRADING INFORMATION**

Polish

**EXCELLENT**

Symmetry

**EXCELLENT**

Fluorescence

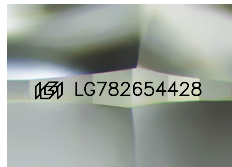
**SLIGHT**

Inscription(s)

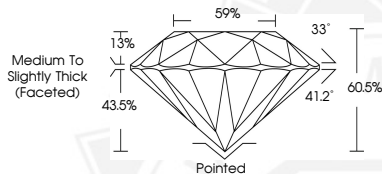
**IGI LG782654428**

Comments: This Laboratory Grown Diamond was created by Chemical Vapor Deposition (CVD) growth process.

Indications of post-growth treatment.



Sample Image Used



March 30, 2026

IGI Report Number **LG782654428**

**ROUND BRILLIANT  
LABORATORY GROWN DIAMOND  
6.43 - 6.47 X 3.90 MM**

Carat Weight **0.99 CARAT**  
Color Grade **FANCY INTENSE**

Clarity Grade **VS 1**  
Cut Grade **IDEAL**

Polish **EXCELLENT**  
Symmetry **EXCELLENT**

Fluorescence **SLIGHT**  
Inscription(s) **IGI LG782654428**

Comments: This Laboratory Grown Diamond was created by Chemical Vapor Deposition (CVD) growth process. Indications of post-growth treatment.

THIS DOCUMENT WAS PRODUCED WITH THE FOLLOWING SECURITY MEASURES: SPECIAL DOCUMENT PAPER, INK SCREENS, WATERMARK, BACKGROUND DESIGNS, HOLOGRAM AND OTHER SECURITY FEATURES NOT LISTED AND DO EXCEED DOCUMENT SECURITY INDUSTRY GUIDELINES.

For terms & conditions and to verify this report, please visit [www.igi.org](http://www.igi.org)