



March 27, 2026

IGI Report Number **LG782654409**

ROUND BRILLIANT

LABORATORY GROWN DIAMOND

6.29 - 6.32 X 3.78 MM

Carat Weight **0.91 CARAT**

Color Grade **FANCY VIVID BLUE**

Clarity Grade **VVS 2**

Cut Grade **IDEAL**

Polish **EXCELLENT**

Symmetry **EXCELLENT**

Fluorescence **NONE**

Inscription(s) **IGI LG782654409**

Comments: This Laboratory Grown Diamond was created by Chemical Vapor Deposition (CVD) growth process. Indications of post-growth treatment.
Secondary color: Green

LABORATORY GROWN DIAMOND REPORT

March 27, 2026

IGI Report Number

LG782654409

Description

LABORATORY GROWN DIAMOND

Shape and Cutting Style

ROUND BRILLIANT

Measurements

6.29 - 6.32 X 3.78 MM

GRADING RESULTS

Carat Weight

0.91 CARAT

Color Grade

FANCY VIVID BLUE

Clarity Grade

VVS 2

Cut Grade

IDEAL

ADDITIONAL GRADING INFORMATION

Polish

EXCELLENT

Symmetry

EXCELLENT

Fluorescence

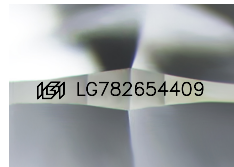
NONE

Inscription(s)

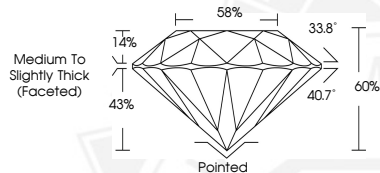
IGI LG782654409

Comments: This Laboratory Grown Diamond was created by Chemical Vapor Deposition (CVD) growth process.
Indications of post-growth treatment.

Secondary color: Green



Sample Image Used



March 27, 2026

IGI Report Number **LG782654409**

ROUND BRILLIANT

LABORATORY GROWN DIAMOND

6.29 - 6.32 X 3.78 MM

Carat Weight **0.91 CARAT**

Color Grade **FANCY VIVID BLUE**

Clarity Grade **VVS 2**

Cut Grade **IDEAL**

Polish **EXCELLENT**

Symmetry **EXCELLENT**

Fluorescence **NONE**

Inscription(s) **IGI LG782654409**

Comments: This Laboratory Grown Diamond was created by Chemical Vapor Deposition (CVD) growth process. Indications of post-growth treatment.
Secondary color: Green



THIS DOCUMENT WAS PRODUCED WITH THE FOLLOWING SECURITY MEASURES: SPECIAL DOCUMENT PAPER, INK SCREENS, WATERMARK, BACKGROUND DESIGNS, HOLOGRAM AND OTHER SECURITY FEATURES NOT LISTED AND DO EXCEED DOCUMENT SECURITY INDUSTRY GUIDELINES.