



March 28, 2026

IGI Report Number LG782653784
ROUND MODIFIED BRILLIANT
LABORATORY GROWN DIAMOND
6.16 - 6.18 X 3.74 MM

Carat Weight 0.94 CARAT
Color Grade FANCY VIVID BLUE
Clarity Grade VVS 2
Polish EXCELLENT
Symmetry EXCELLENT
Fluorescence NONE
Inscription(s) IGI LG782653784

Comments: This Laboratory Grown Diamond was created by Chemical Vapor Deposition (CVD) growth process. Indications of post-growth treatment.

LABORATORY GROWN DIAMOND REPORT

March 28, 2026
IGI Report Number **LG782653784**
Description **LABORATORY GROWN DIAMOND**
Shape and Cutting Style **ROUND MODIFIED BRILLIANT**
Measurements **6.16 - 6.18 X 3.74 MM**

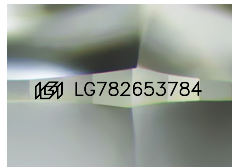
GRADING RESULTS

Carat Weight 0.94 CARAT
Color Grade FANCY VIVID BLUE
Clarity Grade VVS 2

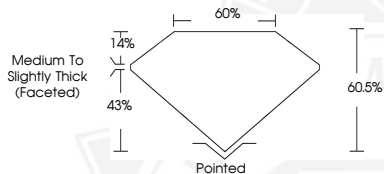
ADDITIONAL GRADING INFORMATION

Polish EXCELLENT
Symmetry EXCELLENT
Fluorescence NONE
Inscription(s) IGI LG782653784

Comments: This Laboratory Grown Diamond was created by Chemical Vapor Deposition (CVD) growth process. Indications of post-growth treatment.



Sample Image Used



March 28, 2026

IGI Report Number LG782653784
ROUND MODIFIED BRILLIANT
LABORATORY GROWN DIAMOND
6.16 - 6.18 X 3.74 MM

Carat Weight 0.94 CARAT
Color Grade FANCY VIVID BLUE
Clarity Grade VVS 2
Polish EXCELLENT
Symmetry EXCELLENT
Fluorescence NONE
Inscription(s) IGI LG782653784

Comments: This Laboratory Grown Diamond was created by Chemical Vapor Deposition (CVD) growth process. Indications of post-growth treatment.



THIS DOCUMENT WAS PRODUCED WITH THE FOLLOWING SECURITY MEASURES: SPECIAL DOCUMENT PAPER, INK SCREENS, WATERMARK, BACKGROUND DESIGNS, HOLOGRAM AND OTHER SECURITY FEATURES NOT LISTED AND DO EXCEED DOCUMENT SECURITY INDUSTRY GUIDELINES.