



June 12, 2026

IGI Report Number **LG782652017**

**ROUND BRILLIANT
LABORATORY GROWN DIAMOND
5.61 - 5.64 X 3.47 MM**

| | |
|----------------|------------------------|
| Carat Weight | 0.67 CARAT |
| Color Grade | D |
| Clarity Grade | VVS 1 |
| Cut Grade | IDEAL |
| Polish | EXCELLENT |
| Symmetry | EXCELLENT |
| Fluorescence | NONE |
| Inscription(s) | IGI LG782652017 |

Comments: As Grown - No indication of post-growth treatment. This Laboratory Grown Diamond was created by High Pressure High Temperature (HPHT) growth process. Type II

LABORATORY GROWN DIAMOND REPORT

| | |
|-------------------------|---------------------------------|
| June 12, 2026 | |
| IGI Report Number | LG782652017 |
| Description | LABORATORY GROWN DIAMOND |
| Shape and Cutting Style | ROUND BRILLIANT |
| Measurements | 5.61 - 5.64 X 3.47 MM |

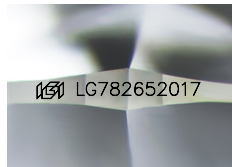
GRADING RESULTS

| | |
|---------------|-------------------|
| Carat Weight | 0.67 CARAT |
| Color Grade | D |
| Clarity Grade | VVS 1 |
| Cut Grade | IDEAL |

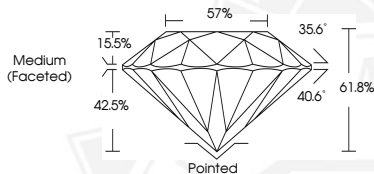
ADDITIONAL GRADING INFORMATION

| | |
|----------------|------------------------|
| Polish | EXCELLENT |
| Symmetry | EXCELLENT |
| Fluorescence | NONE |
| Inscription(s) | IGI LG782652017 |

Comments: As Grown - No indication of post-growth treatment. This Laboratory Grown Diamond was created by High Pressure High Temperature (HPHT) growth process. Type II



Sample Image Used



June 12, 2026

IGI Report Number **LG782652017**

**ROUND BRILLIANT
LABORATORY GROWN DIAMOND
5.61 - 5.64 X 3.47 MM**

| | |
|----------------|------------------------|
| Carat Weight | 0.67 CARAT |
| Color Grade | D |
| Clarity Grade | VVS 1 |
| Cut Grade | IDEAL |
| Polish | EXCELLENT |
| Symmetry | EXCELLENT |
| Fluorescence | NONE |
| Inscription(s) | IGI LG782652017 |

Comments: As Grown - No indication of post-growth treatment. This Laboratory Grown Diamond was created by High Pressure High Temperature (HPHT) growth process. Type II

THIS DOCUMENT WAS PRODUCED WITH THE FOLLOWING SECURITY MEASURES: SPECIAL DOCUMENT PAPER, INK SCREENS, WATERMARK, BACKGROUND DESIGNS, HOLOGRAM AND OTHER SECURITY FEATURES NOT LISTED AND DO EXCEED DOCUMENT SECURITY INDUSTRY GUIDELINES.

For terms & conditions and to verify this report, please visit www.igi.org