



**INTERNATIONAL  
GEMOLOGICAL  
INSTITUTE**

**ELECTRONIC COPY**

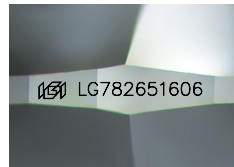


May 28, 2026

**IGI Report Number** LG782651606  
**ROUND BRILLIANT**  
**LABORATORY GROWN DIAMOND**  
**5.06 - 5.10 X 3.13 MM**

**LABORATORY GROWN DIAMOND REPORT**

May 28, 2026  
IGI Report Number **LG782651606**  
Description **LABORATORY GROWN DIAMOND**  
Shape and Cutting Style **ROUND BRILLIANT**  
Measurements **5.06 - 5.10 X 3.13 MM**



Sample Image Used

**0.50 CARAT**  
**D**  
**VVS 2**  
**IDEAL**  
**EXCELLENT**  
**EXCELLENT**  
**NONE**  
Inscription(s) **IGI LG782651606**

Comments: HEARTS & ARROWS As Grown - No indication of post-growth treatment. This Laboratory Grown Diamond was created by High Pressure High Temperature (HPHT) growth process. Type II

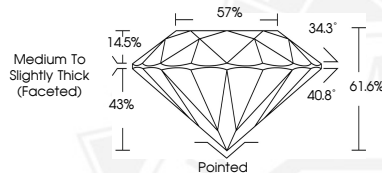
**GRADING RESULTS**

Carat Weight **0.50 CARAT**  
Color Grade **D**  
Clarity Grade **VVS 2**  
Cut Grade **IDEAL**

**ADDITIONAL GRADING INFORMATION**

Polish **EXCELLENT**  
Symmetry **EXCELLENT**  
Fluorescence **NONE**  
Inscription(s) **IGI LG782651606**

Comments: HEARTS & ARROWS As Grown - No indication of post-growth treatment. This Laboratory Grown Diamond was created by High Pressure High Temperature (HPHT) growth process. Type II



HEARTS & ARROWS



May 28, 2026

**IGI Report Number** LG782651606  
**ROUND BRILLIANT**  
**LABORATORY GROWN DIAMOND**  
**5.06 - 5.10 X 3.13 MM**

**0.50 CARAT**  
**D**  
**VVS 2**  
**IDEAL**  
**EXCELLENT**  
**EXCELLENT**  
**NONE**  
Inscription(s) **IGI LG782651606**

Comments: HEARTS & ARROWS As Grown - No indication of post-growth treatment. This Laboratory Grown Diamond was created by High Pressure High Temperature (HPHT) growth process. Type II

THIS DOCUMENT WAS PRODUCED WITH THE FOLLOWING SECURITY MEASURES: SPECIAL DOCUMENT PAPER, INK SCREENS, WATERMARK, BACKGROUND DESIGNS, HOLOGRAM AND OTHER SECURITY FEATURES NOT LISTED AND DO EXCEED DOCUMENT SECURITY INDUSTRY GUIDELINES.

For terms & conditions and to verify this report, please visit [www.igi.org](http://www.igi.org)