



May 15, 2026

**IGI Report Number LG782651457**  
**OVAL MODIFIED BRILLIANT**  
**LABORATORY GROWN DIAMOND**  
**7.17 X 5.17 X 3.24 MM**

Carat Weight **0.96 CARAT**  
Color Grade **FANCY YELLOW**  
Clarity Grade **VS 2**  
Polish **VERY GOOD**  
Symmetry **VERY GOOD**  
Fluorescence **NONE**  
Inscription(s) **IGI LG782651457**

Comments: This Laboratory Grown Diamond was created by Chemical Vapor Deposition (CVD) growth process.

**LABORATORY GROWN DIAMOND REPORT**

May 15, 2026  
IGI Report Number **LG782651457**  
Description **LABORATORY GROWN DIAMOND**  
Shape and Cutting Style **OVAL MODIFIED BRILLIANT**  
Measurements **7.17 X 5.17 X 3.24 MM**

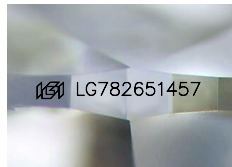
**GRADING RESULTS**

Carat Weight **0.96 CARAT**  
Color Grade **FANCY YELLOW**  
Clarity Grade **VS 2**

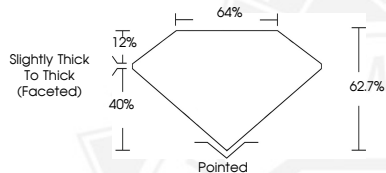
**ADDITIONAL GRADING INFORMATION**

Polish **VERY GOOD**  
Symmetry **VERY GOOD**  
Fluorescence **NONE**  
Inscription(s) **IGI LG782651457**

Comments: This Laboratory Grown Diamond was created by Chemical Vapor Deposition (CVD) growth process.



Sample Image Used



May 15, 2026

**IGI Report Number LG782651457**  
**OVAL MODIFIED BRILLIANT**  
**LABORATORY GROWN DIAMOND**  
**7.17 X 5.17 X 3.24 MM**

Carat Weight **0.96 CARAT**  
Color Grade **FANCY YELLOW**  
Clarity Grade **VS 2**  
Polish **VERY GOOD**  
Symmetry **VERY GOOD**  
Fluorescence **NONE**  
Inscription(s) **IGI LG782651457**

Comments: This Laboratory Grown Diamond was created by Chemical Vapor Deposition (CVD) growth process.



THIS DOCUMENT WAS PRODUCED WITH THE FOLLOWING SECURITY MEASURES: SPECIAL DOCUMENT PAPER, INK SCREENS, WATERMARK, BACKGROUND DESIGNS, HOLOGRAM AND OTHER SECURITY FEATURES NOT LISTED AND DO EXCEED DOCUMENT SECURITY INDUSTRY GUIDELINES.