



**INTERNATIONAL
GEMOLOGICAL
INSTITUTE**

ELECTRONIC COPY



May 13, 2026

IGI Report Number LG782651340
**CUT CORNERED RECTANGULAR
MODIFIED BRILLIANT**
LABORATORY GROWN DIAMOND
5.62 X 4.01 X 2.65 MM

LABORATORY GROWN DIAMOND REPORT

May 13, 2026

IGI Report Number

LG782651340

Description

LABORATORY GROWN DIAMOND

Shape and Cutting Style

**CUT CORNERED RECTANGULAR MODIFIED
BRILLIANT**

Measurements

5.62 X 4.01 X 2.65 MM

GRADING RESULTS

Carat Weight

0.52 CARAT

Color Grade

FANCY VIVID PINK

Clarity Grade

VS 1

ADDITIONAL GRADING INFORMATION

Polish

VERY GOOD

Symmetry

VERY GOOD

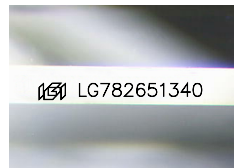
Fluorescence

STRONG

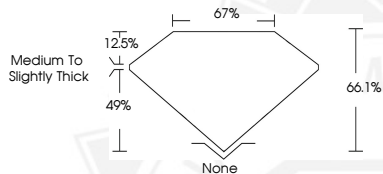
Inscription(s)

IGI LG782651340

Comments: This Laboratory Grown Diamond was created by
Chemical Vapor Deposition (CVD) growth process.
Indications of post-growth treatment.



Sample Image Used



May 13, 2026

IGI Report Number LG782651340
**CUT CORNERED RECTANGULAR
MODIFIED BRILLIANT**
LABORATORY GROWN DIAMOND
5.62 X 4.01 X 2.65 MM

Carat Weight **0.52 CARAT**
Color Grade **FANCY VIVID PINK**
Clarity Grade **VS 1**
Polish **VERY GOOD**
Symmetry **VERY GOOD**
Fluorescence **STRONG**
Inscription(s) **IGI LG782651340**

Comments: This Laboratory Grown Diamond was created by
Chemical Vapor Deposition (CVD) growth process. Indications of
post-growth treatment.



THIS DOCUMENT WAS PRODUCED WITH THE FOLLOWING SECURITY MEASURES: SPECIAL DOCUMENT PAPER, INK SCREENS, WATERMARK, BACKGROUND DESIGNS, HOLOGRAM AND OTHER SECURITY FEATURES NOT LISTED AND DO EXCEED DOCUMENT SECURITY INDUSTRY GUIDELINES.

For terms & conditions and to verify this report, please visit www.igi.org