



May 6, 2026

**IGI Report Number** LG782651135  
**ROUND BRILLIANT**  
**LABORATORY GROWN DIAMOND**  
**6.30 - 6.33 X 3.77 MM**

**0.94 CARAT**  
**D**  
**VS 1**  
**EXCELLENT**  
**EXCELLENT**  
**EXCELLENT**  
**NONE**  
**IGI LG782651135**

Comments: As Grown - No indication of post-growth treatment. This Laboratory Grown Diamond was created by High Pressure High Temperature (HPHT) growth process. Type II

**LABORATORY GROWN DIAMOND REPORT**

May 6, 2026  
IGI Report Number **LG782651135**  
Description **LABORATORY GROWN DIAMOND**  
Shape and Cutting Style **ROUND BRILLIANT**  
Measurements **6.30 - 6.33 X 3.77 MM**

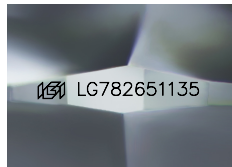
**GRADING RESULTS**

Carat Weight **0.94 CARAT**  
Color Grade **D**  
Clarity Grade **VS 1**  
Cut Grade **EXCELLENT**

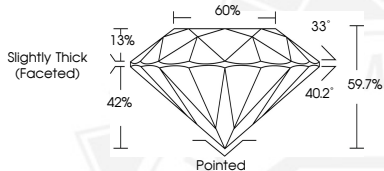
**ADDITIONAL GRADING INFORMATION**

Polish **EXCELLENT**  
Symmetry **EXCELLENT**  
Fluorescence **NONE**  
Inscription(s) **IGI LG782651135**

Comments: As Grown - No indication of post-growth treatment. This Laboratory Grown Diamond was created by High Pressure High Temperature (HPHT) growth process. Type II



Sample Image Used



May 6, 2026

**IGI Report Number** LG782651135  
**ROUND BRILLIANT**  
**LABORATORY GROWN DIAMOND**  
**6.30 - 6.33 X 3.77 MM**

**0.94 CARAT**  
**D**  
**VS 1**  
**EXCELLENT**  
**EXCELLENT**  
**EXCELLENT**  
**NONE**  
**IGI LG782651135**

Comments: As Grown - No indication of post-growth treatment. This Laboratory Grown Diamond was created by High Pressure High Temperature (HPHT) growth process. Type II

THIS DOCUMENT WAS PRODUCED WITH THE FOLLOWING SECURITY MEASURES: SPECIAL DOCUMENT PAPER, INK SCREENS, WATERMARK, BACKGROUND DESIGNS, HOLOGRAM AND OTHER SECURITY FEATURES NOT LISTED AND DO EXCEED DOCUMENT SECURITY INDUSTRY GUIDELINES.

For terms & conditions and to verify this report, please visit [www.igi.org](http://www.igi.org)