



April 29, 2026

IGI Report Number LG782650993
PEAR MODIFIED BRILLIANT
LABORATORY GROWN DIAMOND
8.01 X 5.06 X 3.15 MM

Carat Weight 0.92 CARAT
Color Grade FANCY INTENSE
YELLOW

Clarity Grade VVS 2
Polish EXCELLENT
Symmetry EXCELLENT
Fluorescence NONE
Inscription(s) IGI LG782650993

Comments: This Laboratory Grown Diamond was created by Chemical Vapor Deposition (CVD) growth process.

LABORATORY GROWN DIAMOND REPORT

April 29, 2026
IGI Report Number **LG782650993**
Description **LABORATORY GROWN DIAMOND**
Shape and Cutting Style **PEAR MODIFIED BRILLIANT**
Measurements **8.01 X 5.06 X 3.15 MM**

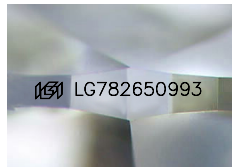
GRADING RESULTS

Carat Weight 0.92 CARAT
Color Grade FANCY INTENSE YELLOW
Clarity Grade VVS 2

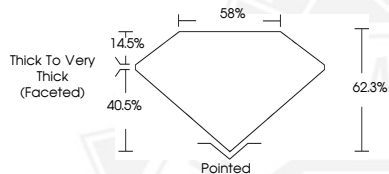
ADDITIONAL GRADING INFORMATION

Polish EXCELLENT
Symmetry EXCELLENT
Fluorescence NONE
Inscription(s) IGI LG782650993

Comments: This Laboratory Grown Diamond was created by Chemical Vapor Deposition (CVD) growth process.



Sample Image Used



April 29, 2026

IGI Report Number LG782650993
PEAR MODIFIED BRILLIANT
LABORATORY GROWN DIAMOND
8.01 X 5.06 X 3.15 MM

Carat Weight 0.92 CARAT
Color Grade FANCY INTENSE
YELLOW

Clarity Grade VVS 2
Polish EXCELLENT
Symmetry EXCELLENT
Fluorescence NONE
Inscription(s) IGI LG782650993

Comments: This Laboratory Grown Diamond was created by Chemical Vapor Deposition (CVD) growth process.



THIS DOCUMENT WAS PRODUCED WITH THE FOLLOWING SECURITY MEASURES: SPECIAL DOCUMENT PAPER, INK SCREENS, WATERMARK, BACKGROUND DESIGNS, HOLOGRAM AND OTHER SECURITY FEATURES NOT LISTED AND DO EXCEED DOCUMENT SECURITY INDUSTRY GUIDELINES.