



April 15, 2026

**IGI Report Number** LG782650828  
**ROUND BRILLIANT**  
**LABORATORY GROWN DIAMOND**  
**5.77 - 5.81 X 3.51 MM**

|                |                        |
|----------------|------------------------|
| Carat Weight   | <b>0.71 CARAT</b>      |
| Color Grade    | <b>FANCY PINK</b>      |
| Clarity Grade  | <b>VS 1</b>            |
| Cut Grade      | <b>EXCELLENT</b>       |
| Polish         | <b>EXCELLENT</b>       |
| Symmetry       | <b>EXCELLENT</b>       |
| Fluorescence   | <b>SLIGHT</b>          |
| Inscription(s) | <b>IGI LG782650828</b> |

Comments: This Laboratory Grown Diamond was created by Chemical Vapor Deposition (CVD) growth process. Indications of post-growth treatment.

**LABORATORY GROWN DIAMOND REPORT**

April 15, 2026  
IGI Report Number **LG782650828**  
Description **LABORATORY GROWN DIAMOND**  
Shape and Cutting Style **ROUND BRILLIANT**  
Measurements **5.77 - 5.81 X 3.51 MM**

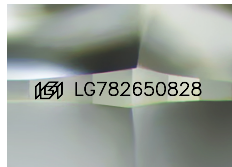
**GRADING RESULTS**

Carat Weight **0.71 CARAT**  
Color Grade **FANCY PINK**  
Clarity Grade **VS 1**  
Cut Grade **EXCELLENT**

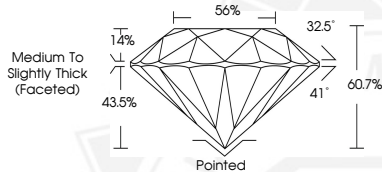
**ADDITIONAL GRADING INFORMATION**

Polish **EXCELLENT**  
Symmetry **EXCELLENT**  
Fluorescence **SLIGHT**  
Inscription(s) **IGI LG782650828**

Comments: This Laboratory Grown Diamond was created by Chemical Vapor Deposition (CVD) growth process. Indications of post-growth treatment.



Sample Image Used



April 15, 2026

**IGI Report Number** LG782650828  
**ROUND BRILLIANT**  
**LABORATORY GROWN DIAMOND**  
**5.77 - 5.81 X 3.51 MM**

|                |                        |
|----------------|------------------------|
| Carat Weight   | <b>0.71 CARAT</b>      |
| Color Grade    | <b>FANCY PINK</b>      |
| Clarity Grade  | <b>VS 1</b>            |
| Cut Grade      | <b>EXCELLENT</b>       |
| Polish         | <b>EXCELLENT</b>       |
| Symmetry       | <b>EXCELLENT</b>       |
| Fluorescence   | <b>SLIGHT</b>          |
| Inscription(s) | <b>IGI LG782650828</b> |

Comments: This Laboratory Grown Diamond was created by Chemical Vapor Deposition (CVD) growth process. Indications of post-growth treatment.



THIS DOCUMENT WAS PRODUCED WITH THE FOLLOWING SECURITY MEASURES: SPECIAL DOCUMENT PAPER, INK SCREENS, WATERMARK, BACKGROUND DESIGNS, HOLOGRAM AND OTHER SECURITY FEATURES NOT LISTED AND DO EXCEED DOCUMENT SECURITY INDUSTRY GUIDELINES.