



ELECTRONIC COPY

LG782649765
Report verification at igi.org



March 12, 2026

IGI Report Number **LG782649765**

Description **LABORATORY GROWN DIAMOND**

Shape and Cutting Style **ROUND BRILLIANT**

Measurements **6.92 - 6.96 X 4.20 MM**

GRADING RESULTS

Carat Weight **1.24 CARAT**

Color Grade **F**

Clarity Grade **SI 1**

Cut Grade **IDEAL**

March 12, 2026

IGI Report Number **LG782649765**

Description **LABORATORY GROWN DIAMOND**

Shape and Cutting Style **ROUND BRILLIANT**

Measurements **6.92 - 6.96 X 4.20 MM**

GRADING RESULTS

Carat Weight **1.24 CARAT**

Color Grade **F**

Clarity Grade **SI 1**

Cut Grade **IDEAL**

ADDITIONAL GRADING INFORMATION

Polish **EXCELLENT**

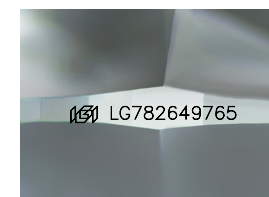
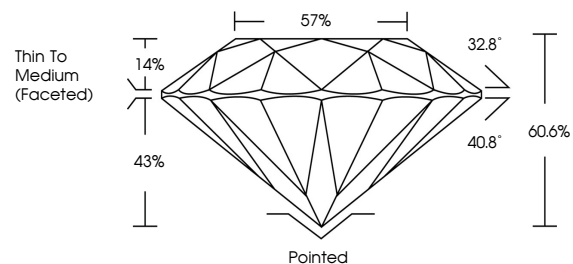
Symmetry **EXCELLENT**

Fluorescence **NONE**

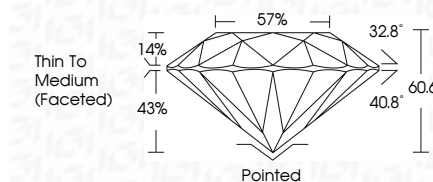
Inscription(s) **IGI LG782649765**

Comments: This Laboratory Grown Diamond was created by Chemical Vapor Deposition (CVD) growth process. Type IIa

PROPORTIONS



Sample Image Used



COLOR

D E F G H I J Faint Very Light Light

CLARITY

FL	IF	VS ¹⁻²	VS ¹⁻²	SI ¹⁻²	I ¹⁻³
Flawless	Internally Flawless	Very Very Slightly Included	Very Slightly Included	Slightly Included	Included

ADDITIONAL GRADING INFORMATION

Polish **EXCELLENT**

Symmetry **EXCELLENT**

Fluorescence **NONE**

Inscription(s) **IGI LG782649765**

Comments: This Laboratory Grown Diamond was created by Chemical Vapor Deposition (CVD) growth process. Type IIa



IGI



March 12, 2026	IGI Report No LG782649765	ROUND BRILLIANT	6.92 - 6.96 X 4.20 MM	1.24 CARAT	F	SI 1	IDEAL	60.6%	57%	Thin To Medium (Faceted)	Pointed	EXCELLENT	EXCELLENT	NONE	IGI LG782649765

Comments: This Laboratory Grown Diamond was created by Chemical Vapor Deposition (CVD) growth process. Type IIa