



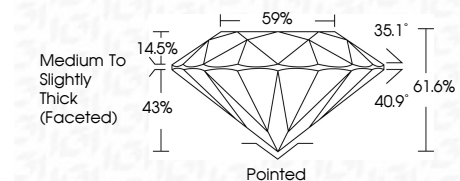
**ELECTRONIC COPY**

LG782645106  
Report verification at igi.org



March 17, 2026  
IGI Report Number **LG782645106**  
Description **LABORATORY GROWN DIAMOND**  
Shape and Cutting Style **ROUND BRILLIANT**  
Measurements **8.06 - 8.10 X 4.97 MM**

**GRADING RESULTS**  
Carat Weight **2.02 CARATS**  
Color Grade **D**  
Clarity Grade **VS 1**  
Cut Grade **IDEAL**



**ADDITIONAL GRADING INFORMATION**  
Polish **EXCELLENT**  
Symmetry **EXCELLENT**  
Fluorescence **NONE**  
Inscription(s) **IGI LG782645106**  
Comments: This Laboratory Grown Diamond was created by Chemical Vapor Deposition (CVD) growth process. Type IIa



March 17, 2026  
IGI Report No LG782645106  
**ROUND BRILLIANT**  
2.02 CARATS  
D  
8.06 - 8.10 X 4.97 MM  
Carat Weight  
Color Grade  
Clarity Grade  
Cut Grade  
Depth  
Table  
Girdle  
Medium To Slightly Thick (Faceted)  
Culet  
Polish  
Symmetry  
Fluorescence  
Inscription(s)  
Pointed  
EXCELLENT  
EXCELLENT  
NONE  
NONE  
IGI LG782645106  
Comments: This Laboratory Grown Diamond was created by Chemical Vapor Deposition (CVD) growth process. Type IIa

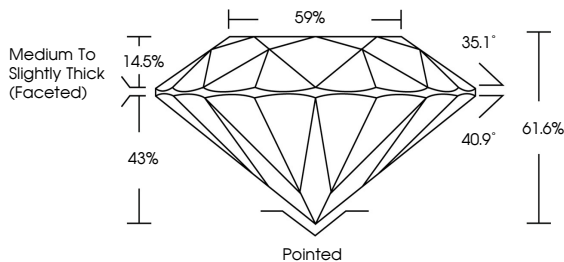
March 17, 2026  
IGI Report Number **LG782645106**  
Description **LABORATORY GROWN DIAMOND**  
Shape and Cutting Style **ROUND BRILLIANT**  
Measurements **8.06 - 8.10 X 4.97 MM**

**GRADING RESULTS**  
Carat Weight **2.02 CARATS**  
Color Grade **D**  
Clarity Grade **VS 1**  
Cut Grade **IDEAL**

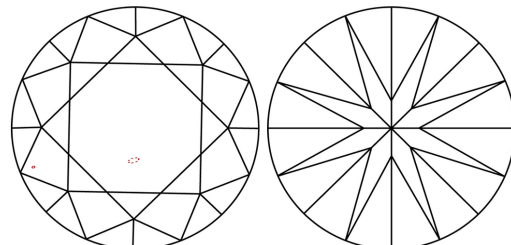
**ADDITIONAL GRADING INFORMATION**  
Polish **EXCELLENT**  
Symmetry **EXCELLENT**  
Fluorescence **NONE**  
Inscription(s) **IGI LG782645106**

Comments: This Laboratory Grown Diamond was created by Chemical Vapor Deposition (CVD) growth process. Type IIa

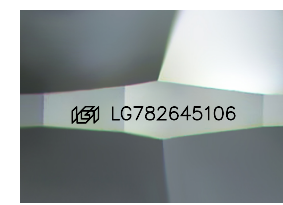
**PROPORTIONS**



**CLARITY CHARACTERISTICS**



**KEY TO SYMBOLS**  
Red symbols indicate internal characteristics.  
Green symbols indicate external characteristics.



Sample Image Used

**COLOR**

D	E	F	G	H	I	J	Faint	Very Light	Light
---	---	---	---	---	---	---	-------	------------	-------

**CLARITY**

FL	IF	VS <sup>1-2</sup>	VS <sup>1-2</sup>	SI <sup>1-2</sup>	I <sup>1-3</sup>
Flawless	Internally Flawless	Very Very Slightly Included	Very Slightly Included	Slightly Included	Included

