



ELECTRONIC COPY

LG782644550
Report verification at igi.org



March 17, 2026
IGI Report Number **LG782644550**
Description **LABORATORY GROWN DIAMOND**
Shape and Cutting Style **MODIFIED DECAGONAL STEP CUT**
Measurements **11.94 X 7.23 X 4.78 MM**
GRADING RESULTS
Carat Weight **2.85 CARATS**
Color Grade **D**
Clarity Grade **VS 1**

LABORATORY GROWN DIAMOND REPORT

March 17, 2026
IGI Report Number **LG782644550**
Description **LABORATORY GROWN DIAMOND**
Shape and Cutting Style **MODIFIED DECAGONAL STEP CUT**
Measurements **11.94 X 7.23 X 4.78 MM**

GRADING RESULTS

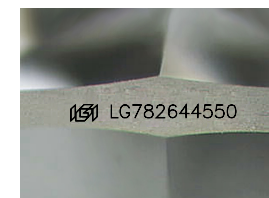
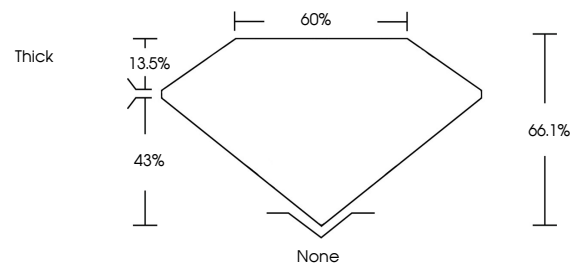
Carat Weight **2.85 CARATS**
Color Grade **D**
Clarity Grade **VS 1**

ADDITIONAL GRADING INFORMATION

Polish **EXCELLENT**
Symmetry **EXCELLENT**
Fluorescence **NONE**
Inscription(s) **IGI LG782644550**

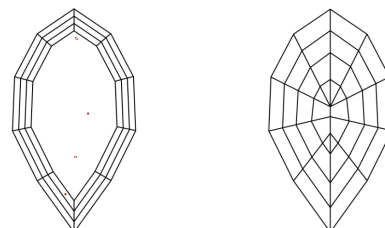
Comments: This Laboratory Grown Diamond was created by Chemical Vapor Deposition (CVD) growth process.
Type IIa

PROPORTIONS



Sample Image Used

CLARITY CHARACTERISTICS



KEY TO SYMBOLS

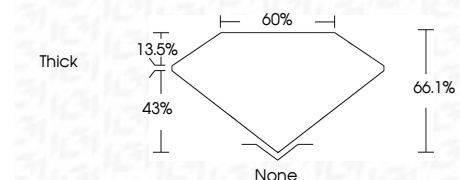
Red symbols indicate internal characteristics.
Green symbols indicate external characteristics.

COLOR

D E F G H I J Faint Very Light Light

CLARITY

FL	IF	VS ¹⁻²	VS ¹⁻²	SI ¹⁻²	I ¹⁻³
Flawless	Internally Flawless	Very Very Slightly Included	Very Slightly Included	Slightly Included	Included



ADDITIONAL GRADING INFORMATION

Polish **EXCELLENT**
Symmetry **EXCELLENT**
Fluorescence **NONE**
Inscription(s) **IGI LG782644550**
Comments: This Laboratory Grown Diamond was created by Chemical Vapor Deposition (CVD) growth process.
Type IIa



March 17, 2026
IGI Report No LG782644550
MODIFIED DECAGONAL STEP CUT
11.94 X 7.23 X 4.78 MM
2.85 CARATS
D
VS 1
66.1%
43%
Thick
None
EXCELLENT
EXCELLENT
NONE
IGI LG782644550
Comments: This Laboratory Grown Diamond was created by Chemical Vapor Deposition (CVD) growth process.
Type IIa