



**ELECTRONIC COPY**

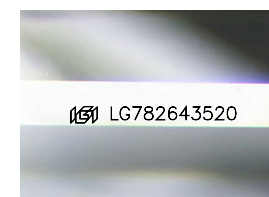
LG782643520  
Report verification at igi.org



March 17, 2026  
IGI Report Number **LG782643520**  
Description **LABORATORY GROWN DIAMOND**  
Shape and Cutting Style **EMERALD CUT**  
Measurements **10.04 X 6.86 X 4.59 MM**

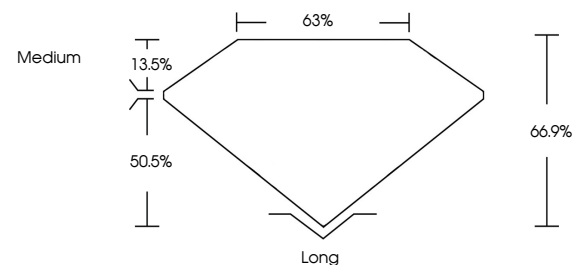
**GRADING RESULTS**

Carat Weight **3.09 CARATS**  
Color Grade **D**  
Clarity Grade **VS 1**

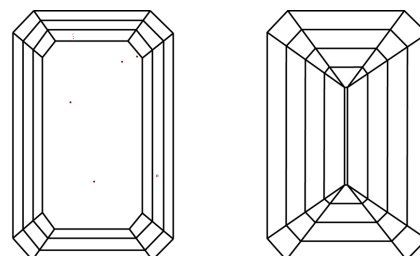


Sample Image Used

**PROPORTIONS**



**CLARITY CHARACTERISTICS**



**KEY TO SYMBOLS**

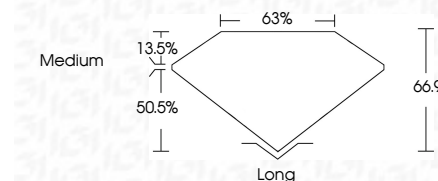
Red symbols indicate internal characteristics.  
Green symbols indicate external characteristics.

**COLOR**

D E F G H I J Faint Very Light Light

**CLARITY**

FL	IF	VS <sup>1-2</sup>	VS <sup>1-2</sup>	SI <sup>1-2</sup>	I <sup>1-3</sup>
Flawless	Internally Flawless	Very Very Slightly Included	Very Slightly Included	Slightly Included	Included



**ADDITIONAL GRADING INFORMATION**

Polish **EXCELLENT**  
Symmetry **EXCELLENT**  
Fluorescence **NONE**  
Inscription(s) **IGI LG782643520**  
Comments: This Laboratory Grown Diamond was created by Chemical Vapor Deposition (CVD) growth process. Type IIa



**IGI**



March 17, 2026  
IGI Report No LG782643520  
EMERALD CUT

3.09 CARATS  
D

10.04 X 6.86 X 4.59 MM

Carat Weight  
Color Grade  
Clarity Grade  
Table  
Depth  
Girdle  
Culet  
Polish  
Symmetry  
Fluorescence  
Inscription(s)

3.09 CARATS  
D  
VS 1  
66.9%  
63%  
Medium  
Long  
EXCELLENT  
EXCELLENT  
NONE  
IGI LG782643520

Comments: This Laboratory Grown Diamond was created by Chemical Vapor Deposition (CVD) growth process. Type IIa