



**ELECTRONIC COPY**

LG782642396  
Report verification at igi.org



March 14, 2026

IGI Report Number **LG782642396**

Description **LABORATORY GROWN DIAMOND**

Shape and Cutting Style **ROUND BRILLIANT**

Measurements **7.34 - 7.38 X 4.62 MM**

**GRADING RESULTS**

Carat Weight **1.56 CARAT**

Color Grade **F**

Clarity Grade **VVS 2**

Cut Grade **EXCELLENT**

March 14, 2026  
IGI Report Number **LG782642396**  
Description **LABORATORY GROWN DIAMOND**  
Shape and Cutting Style **ROUND BRILLIANT**  
Measurements **7.34 - 7.38 X 4.62 MM**

**GRADING RESULTS**

Carat Weight **1.56 CARAT**

Color Grade **F**

Clarity Grade **VVS 2**

Cut Grade **EXCELLENT**

**ADDITIONAL GRADING INFORMATION**

Polish **EXCELLENT**

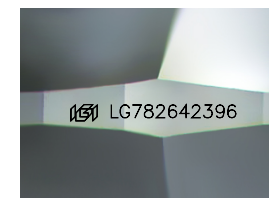
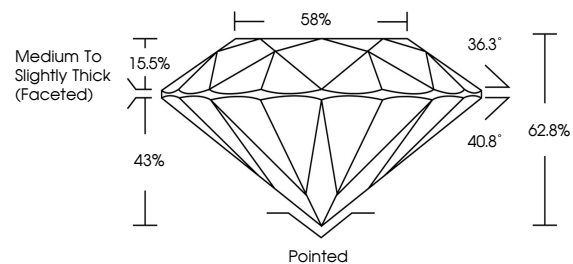
Symmetry **EXCELLENT**

Fluorescence **NONE**

Inscription(s) **IGI LG782642396**

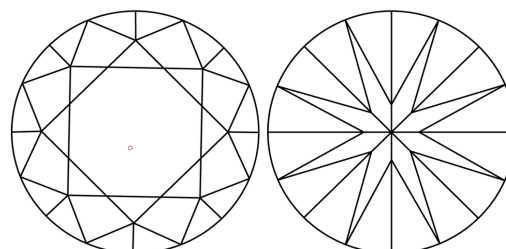
Comments: This Laboratory Grown Diamond was created by Chemical Vapor Deposition (CVD) growth process. Type IIa

**PROPORTIONS**



Sample Image Used

**CLARITY CHARACTERISTICS**



**KEY TO SYMBOLS**

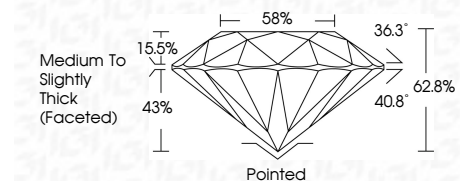
Red symbols indicate internal characteristics.  
Green symbols indicate external characteristics.

**COLOR**

D E F G H I J Faint Very Light Light

**CLARITY**

FL	IF	VVS <sup>1-2</sup>	VS <sup>1-2</sup>	SI <sup>1-2</sup>	I <sup>1-3</sup>
Flawless	Internally Flawless	Very Very Slightly Included	Very Slightly Included	Slightly Included	Included



**ADDITIONAL GRADING INFORMATION**

Polish **EXCELLENT**

Symmetry **EXCELLENT**

Fluorescence **NONE**

Inscription(s) **IGI LG782642396**

Comments: This Laboratory Grown Diamond was created by Chemical Vapor Deposition (CVD) growth process. Type IIa



**IGI**



March 14, 2026  
IGI Report No LG782642396  
ROUND BRILLIANT  
7.34 - 7.38 X 4.62 MM  
Carat Weight 1.56 CARAT  
Color Grade F  
Clarity Grade VVS 2  
Cut Grade EXCELLENT  
Depth 62.8%  
Table 58%  
Girdle Medium To Slightly Thick (Faceted)  
Culet Pointed  
Polish EXCELLENT  
Symmetry EXCELLENT  
Fluorescence NONE  
Inscription(s) IGI LG782642396  
Comments: This Laboratory Grown Diamond was created by Chemical Vapor Deposition (CVD) growth process. Type IIa