



ELECTRONIC COPY

LG782642115
Report verification at igi.org



March 17, 2026

IGI Report Number **LG782642115**

Description **LABORATORY GROWN DIAMOND**

Shape and Cutting Style **CUT CORNERED
RECTANGULAR MODIFIED
BRILLIANT**

Measurements **11.26 X 7.82 X 5.21 MM**

GRADING RESULTS

Carat Weight **3.94 CARATS**

Color Grade **E**

Clarity Grade **VS 1**

March 17, 2026

IGI Report Number **LG782642115**

Description **LABORATORY GROWN DIAMOND**

Shape and Cutting Style **CUT CORNERED RECTANGULAR
MODIFIED BRILLIANT**

Measurements **11.26 X 7.82 X 5.21 MM**

GRADING RESULTS

Carat Weight **3.94 CARATS**

Color Grade **E**

Clarity Grade **VS 1**

ADDITIONAL GRADING INFORMATION

Polish **EXCELLENT**

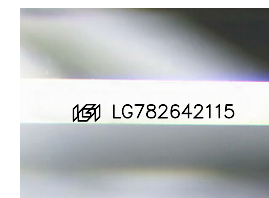
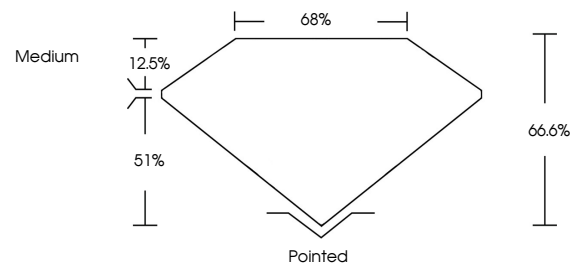
Symmetry **EXCELLENT**

Fluorescence **NONE**

Inscription(s) **IGI LG782642115**

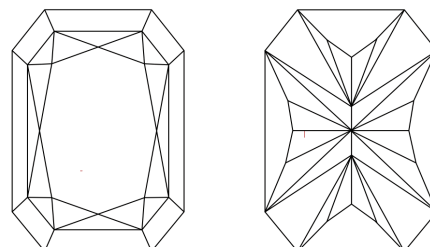
Comments: This Laboratory Grown Diamond was created by Chemical Vapor Deposition (CVD) growth process. Type IIa

PROPORTIONS



Sample Image Used

CLARITY CHARACTERISTICS



KEY TO SYMBOLS

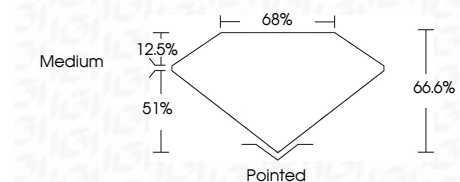
Red symbols indicate internal characteristics.
Green symbols indicate external characteristics.

COLOR

D E F G H I J Faint Very Light Light

CLARITY

FL	IF	VS ¹⁻²	VS ¹⁻²	SI ¹⁻²	I ¹⁻³
Flawless	Internally Flawless	Very Very Slightly Included	Very Slightly Included	Slightly Included	Included



ADDITIONAL GRADING INFORMATION

Polish **EXCELLENT**

Symmetry **EXCELLENT**

Fluorescence **NONE**

Inscription(s) **IGI LG782642115**

Comments: This Laboratory Grown Diamond was created by Chemical Vapor Deposition (CVD) growth process. Type IIa



IGI



March 17, 2026
IGI Report No LG782642115
CUT CORNERED RECT. MODIFIED BRILLIANT
3.94 CARATS
E
11.26 X 7.82 X 5.21 MM
Color Grade
Depth 66.6%
Table 12.5%
Girdle 51%
Medium
Pointed
EXCELLENT
EXCELLENT
NONE
IGI LG782642115

Comments: This Laboratory Grown Diamond was created by Chemical Vapor Deposition (CVD) growth process. Type IIa