



ELECTRONIC COPY

LG782641930
Report verification at igi.org



March 18, 2026
IGI Report Number **LG782641930**
Description **LABORATORY GROWN DIAMOND**
Shape and Cutting Style **CUT CORNERED
RECTANGULAR MODIFIED
BRILLIANT**
Measurements **9.18 X 6.30 X 4.54 MM**
GRADING RESULTS
Carat Weight **2.53 CARATS**
Color Grade **FANCY INTENSE YELLOW**
Clarity Grade **VS 1**

March 18, 2026
IGI Report Number **LG782641930**
Description **LABORATORY GROWN DIAMOND**
Shape and Cutting Style **CUT CORNERED RECTANGULAR
MODIFIED BRILLIANT**
Measurements **9.18 X 6.30 X 4.54 MM**

GRADING RESULTS

Carat Weight **2.53 CARATS**
Color Grade **FANCY INTENSE YELLOW**
Clarity Grade **VS 1**

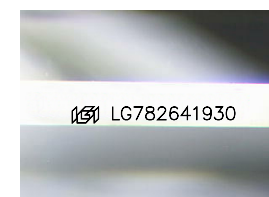
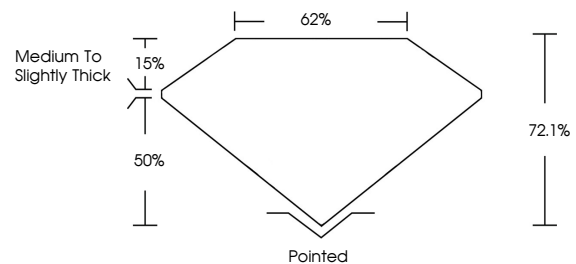
ADDITIONAL GRADING INFORMATION

Polish **EXCELLENT**
Symmetry **EXCELLENT**
Fluorescence **NONE**
Inscription(s) **IGI LG782641930**

Comments: This Laboratory Grown Diamond was created by Chemical Vapor Deposition (CVD) growth process.

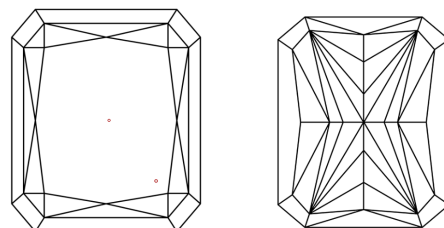
Secondary color: Grey

PROPORTIONS



Sample Image Used

CLARITY CHARACTERISTICS



KEY TO SYMBOLS

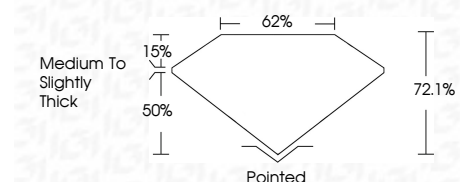
Red symbols indicate internal characteristics.
Green symbols indicate external characteristics.

COLOR

D E F G H I J Faint Very Light Light

CLARITY

FL	IF	VS ¹⁻²	VS ¹⁻²	SI ¹⁻²	I ¹⁻³
Flawless	Internally Flawless	Very Very Slightly Included	Very Slightly Included	Slightly Included	Included



ADDITIONAL GRADING INFORMATION

Polish **EXCELLENT**
Symmetry **EXCELLENT**
Fluorescence **NONE**
Inscription(s) **IGI LG782641930**
Comments: This Laboratory Grown Diamond was created by Chemical Vapor Deposition (CVD) growth process.
Secondary color: Grey



March 18, 2026
IGI Report No **LG782641930**
CUT CORNERED RECT. MODIFIED BRILLIANT
9.18 X 6.30 X 4.54 MM
2.53 CARATS
FANCY INTENSE YELLOW
VS 1
72.1%
62%
Medium to Slightly Thick
Pointed
EXCELLENT
EXCELLENT
NONE
IGI LG782641930
Comments: This Laboratory Grown Diamond was created by Chemical Vapor Deposition (CVD) growth process.
Secondary color: Grey