



**ELECTRONIC COPY**

LG782631964  
Report verification at igi.org



March 20, 2026

IGI Report Number **LG782631964**

Description **LABORATORY GROWN DIAMOND**

Shape and Cutting Style **ROUND BRILLIANT**

Measurements **7.32 - 7.36 X 4.59 MM**

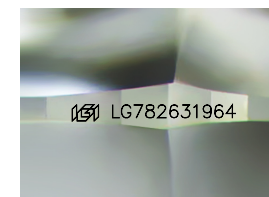
**GRADING RESULTS**

Carat Weight **1.55 CARAT**

Color Grade **E**

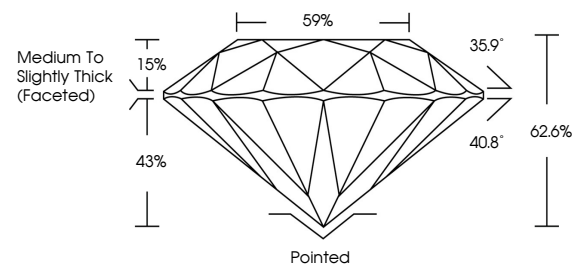
Clarity Grade **VS 1**

Cut Grade **EXCELLENT**

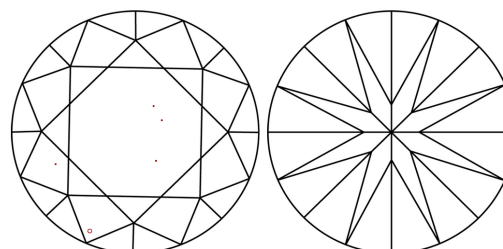


Sample Image Used

**PROPORTIONS**



**CLARITY CHARACTERISTICS**



**KEY TO SYMBOLS**

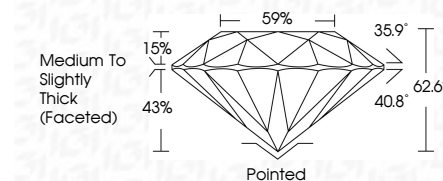
Red symbols indicate internal characteristics.  
Green symbols indicate external characteristics.

**COLOR**

D E F G H I J Faint Very Light Light

**CLARITY**

FL	IF	VS <sup>1-2</sup>	VS <sup>1-2</sup>	SI <sup>1-2</sup>	I <sup>1-3</sup>
Flawless	Internally Flawless	Very Very Slightly Included	Very Slightly Included	Slightly Included	Included



**ADDITIONAL GRADING INFORMATION**

Polish **EXCELLENT**

Symmetry **EXCELLENT**

Fluorescence **NONE**

Inscription(s) **IGI LG782631964**

Comments: This Laboratory Grown Diamond was created by Chemical Vapor Deposition (CVD) growth process. Type IIa



**IGI**



March 20, 2026  
IGI Report No LG782631964  
**ROUND BRILLIANT**

1.55 CARAT  
E  
VS 1  
EXCELLENT  
62.6%  
59%  
Medium To Slightly Thick (Faceted)

Pointed  
EXCELLENT  
EXCELLENT  
NONE  
IGI LG782631964

Cutlet  
Polish  
Symmetry  
Fluorescence  
Inscriptions(s)

Comments: This Laboratory Grown Diamond was created by Chemical Vapor Deposition (CVD) growth process. Type IIa