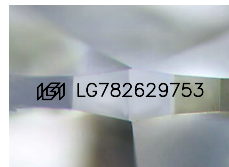




March 16, 2026  
IGI Report Number **LG782629753**  
**PEAR BRILLIANT**  
LABORATORY GROWN DIAMOND  
8.28 X 5.52 X 3.54 MM  
Carat Weight **0.98 CARAT**  
Color Grade **E**  
Clarity Grade **VS 2**  
Polish **EXCELLENT**  
Symmetry **EXCELLENT**  
Fluorescence **NONE**  
Inscription(s) **IGI LG782629753**

**LABORATORY GROWN DIAMOND REPORT**

March 16, 2026  
IGI Report Number **LG782629753**  
Description **LABORATORY GROWN DIAMOND**  
Shape and Cutting Style **PEAR BRILLIANT**  
Measurements **8.28 X 5.52 X 3.54 MM**



Sample Image Used

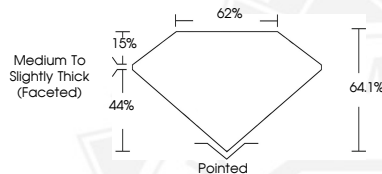
**GRADING RESULTS**

Carat Weight **0.98 CARAT**  
Color Grade **E**  
Clarity Grade **VS 2**

**ADDITIONAL GRADING INFORMATION**

Polish **EXCELLENT**  
Symmetry **EXCELLENT**  
Fluorescence **NONE**  
Inscription(s) **IGI LG782629753**

Comments: This Laboratory Grown Diamond was created by Chemical Vapor Deposition (CVD) growth process.  
Type IIa



March 16, 2026  
IGI Report Number **LG782629753**  
**PEAR BRILLIANT**  
LABORATORY GROWN DIAMOND  
8.28 X 5.52 X 3.54 MM  
Carat Weight **0.98 CARAT**  
Color Grade **E**  
Clarity Grade **VS 2**  
Polish **EXCELLENT**  
Symmetry **EXCELLENT**  
Fluorescence **NONE**  
Inscription(s) **IGI LG782629753**  
Comments: This Laboratory Grown Diamond was created by Chemical Vapor Deposition (CVD) growth process. Type IIa

THIS DOCUMENT WAS PRODUCED WITH THE FOLLOWING SECURITY MEASURES: SPECIAL DOCUMENT PAPER, INK SCREENS, WATERMARK, BACKGROUND DESIGNS, HOLOGRAM AND OTHER SECURITY FEATURES NOT LISTED AND DO EXCEED DOCUMENT SECURITY INDUSTRY GUIDELINES.