



**ELECTRONIC COPY**

LG782627642  
Report verification at igi.org



March 12, 2026

IGI Report Number **LG782627642**

Description **LABORATORY GROWN DIAMOND**

Shape and Cutting Style **ROUND BRILLIANT**

Measurements **6.52 - 6.54 X 4.03 MM**

**GRADING RESULTS**

Carat Weight **1.04 CARAT**

Color Grade **D**

Clarity Grade **VVS 2**

Cut Grade **IDEAL**

March 12, 2026  
IGI Report Number **LG782627642**  
Description **LABORATORY GROWN DIAMOND**  
Shape and Cutting Style **ROUND BRILLIANT**  
Measurements **6.52 - 6.54 X 4.03 MM**

**GRADING RESULTS**

Carat Weight **1.04 CARAT**

Color Grade **D**

Clarity Grade **VVS 2**

Cut Grade **IDEAL**

**ADDITIONAL GRADING INFORMATION**

Polish **EXCELLENT**

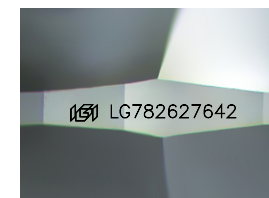
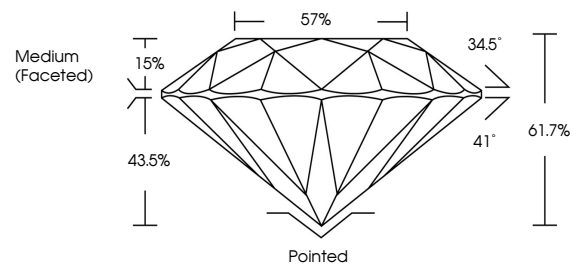
Symmetry **EXCELLENT**

Fluorescence **NONE**

Inscription(s) **IGI LG782627642**

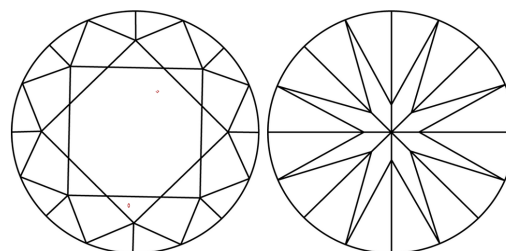
Comments: This Laboratory Grown Diamond was created by Chemical Vapor Deposition (CVD) growth process.  
Type IIa

**PROPORTIONS**



Sample Image Used

**CLARITY CHARACTERISTICS**



**KEY TO SYMBOLS**

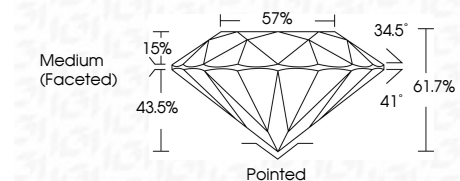
Red symbols indicate internal characteristics.  
Green symbols indicate external characteristics.

**COLOR**

D E F G H I J Faint Very Light Light

**CLARITY**

FL	IF	VVS <sup>1-2</sup>	VS <sup>1-2</sup>	SI <sup>1-2</sup>	I <sup>1-3</sup>
Flawless	Internally Flawless	Very Very Slightly Included	Very Slightly Included	Slightly Included	Included



**ADDITIONAL GRADING INFORMATION**

Polish **EXCELLENT**

Symmetry **EXCELLENT**

Fluorescence **NONE**

Inscription(s) **IGI LG782627642**

Comments: This Laboratory Grown Diamond was created by Chemical Vapor Deposition (CVD) growth process.  
Type IIa



**IGI**



March 12, 2026  
IGI Report No LG782627642  
ROUND BRILLIANT  
6.52 - 6.54 X 4.03 MM  
1.04 CARAT  
D  
VVS 2  
IDEAL  
61.7%  
57%  
Medium (Faceted)

Pointed  
EXCELLENT  
EXCELLENT  
NONE  
NONE  
IGI LG782627642

Cutlet  
Polish  
Symmetry  
Fluorescence  
Inscription(s)

Comments: This Laboratory Grown Diamond was created by Chemical Vapor Deposition (CVD) growth process.  
Type IIa