



ELECTRONIC COPY

LG782623390
Report verification at igi.org



March 24, 2026
IGI Report Number **LG782623390**
Description **LABORATORY GROWN DIAMOND**
Shape and Cutting Style **CUT CORNERED
RECTANGULAR MIXED CUT**
Measurements **8.66 X 5.68 X 4.29 MM**
GRADING RESULTS
Carat Weight **1.99 CARAT**
Color Grade **FANCY INTENSE YELLOW**
Clarity Grade **VS 2**

LABORATORY GROWN DIAMOND REPORT

March 24, 2026
IGI Report Number **LG782623390**
Description **LABORATORY GROWN DIAMOND**
Shape and Cutting Style **CUT CORNERED RECTANGULAR
MIXED CUT**
Measurements **8.66 X 5.68 X 4.29 MM**

GRADING RESULTS

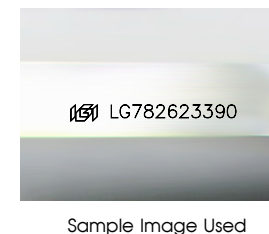
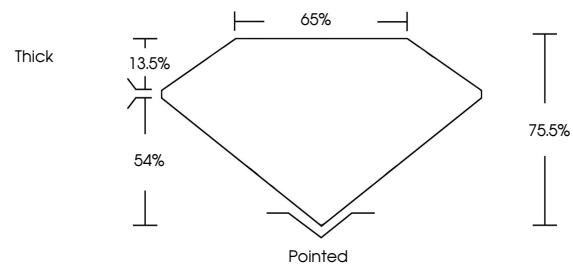
Carat Weight **1.99 CARAT**
Color Grade **FANCY INTENSE YELLOW**
Clarity Grade **VS 2**

ADDITIONAL GRADING INFORMATION

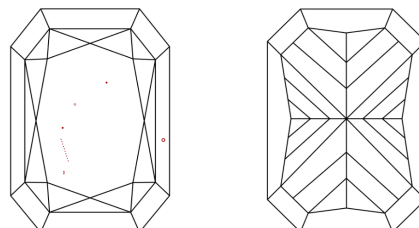
Polish **EXCELLENT**
Symmetry **EXCELLENT**
Fluorescence **NONE**
Inscription(s) **IGI LG782623390**

Comments: This Laboratory Grown Diamond was created by Chemical Vapor Deposition (CVD) growth process.

PROPORTIONS



CLARITY CHARACTERISTICS



KEY TO SYMBOLS

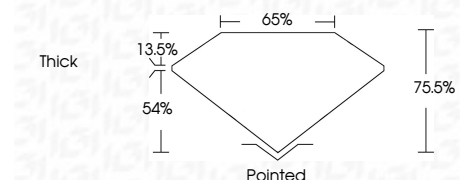
Red symbols indicate internal characteristics.
Green symbols indicate external characteristics.

COLOR

D E F G H I J Faint Very Light Light

CLARITY

FL	IF	VS ¹⁻²	VS ¹⁻²	SI ¹⁻²	I ¹⁻³
Flawless	Internally Flawless	Very Very Slightly Included	Very Slightly Included	Slightly Included	Included



ADDITIONAL GRADING INFORMATION

Polish **EXCELLENT**
Symmetry **EXCELLENT**
Fluorescence **NONE**
Inscription(s) **IGI LG782623390**
Comments: This Laboratory Grown Diamond was created by Chemical Vapor Deposition (CVD) growth process.



March 24, 2026
IGI Report No LG782623390
CUT CORNERED RECT. MIXED CUT
8.66 X 5.68 X 4.29 MM
1.99 CARAT
FANCY INTENSE YELLOW
VS 2
75.5%
65%
Thick
Pointed
EXCELLENT
EXCELLENT
NONE
IGI LG782623390

Comments: This Laboratory Grown Diamond was created by Chemical Vapor Deposition (CVD) growth process.