



ELECTRONIC COPY

LG782623373
Report verification at igi.org



March 24, 2026
IGI Report Number **LG782623373**
Description **LABORATORY GROWN DIAMOND**
Shape and Cutting Style **CUT CORNERED
RECTANGULAR MODIFIED
BRILLIANT**
Measurements **6.89 X 5.12 X 3.54 MM**
GRADING RESULTS
Carat Weight **1.19 CARAT**
Color Grade **FANCY INTENSE YELLOW**
Clarity Grade **VS 1**

March 24, 2026
IGI Report Number **LG782623373**
Description **LABORATORY GROWN DIAMOND**
Shape and Cutting Style **CUT CORNERED RECTANGULAR
MODIFIED BRILLIANT**
Measurements **6.89 X 5.12 X 3.54 MM**

GRADING RESULTS

Carat Weight **1.19 CARAT**
Color Grade **FANCY INTENSE YELLOW**
Clarity Grade **VS 1**

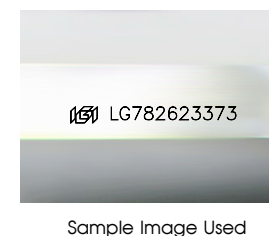
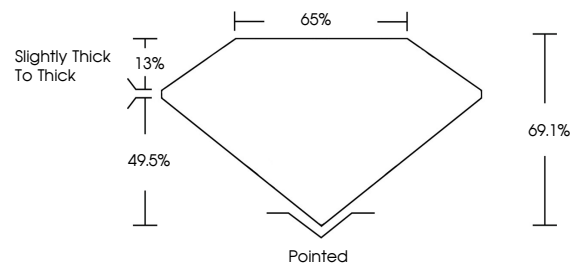
ADDITIONAL GRADING INFORMATION

Polish **EXCELLENT**
Symmetry **EXCELLENT**
Fluorescence **NONE**

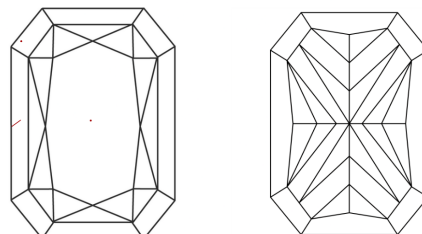
Inscription(s) **IGI LG782623373**

Comments: This Laboratory Grown Diamond was created by Chemical Vapor Deposition (CVD) growth process.

PROPORTIONS



CLARITY CHARACTERISTICS



KEY TO SYMBOLS

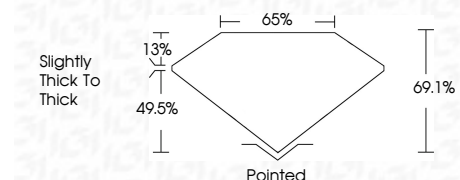
Red symbols indicate internal characteristics.
Green symbols indicate external characteristics.

COLOR

D E F G H I J Faint Very Light Light

CLARITY

FL	IF	VS ¹⁻²	VS ¹⁻²	SI ¹⁻²	I ¹⁻³
Flawless	Internally Flawless	Very Very Slightly Included	Very Slightly Included	Slightly Included	Included



ADDITIONAL GRADING INFORMATION

Polish **EXCELLENT**
Symmetry **EXCELLENT**
Fluorescence **NONE**
Inscription(s) **IGI LG782623373**
Comments: This Laboratory Grown Diamond was created by Chemical Vapor Deposition (CVD) growth process.



March 24, 2026
IGI Report No **LG782623373**
CUT CORNERED RECT. MODIFIED BRILLIANT
6.89 X 5.12 X 3.54 MM
Carat Weight **1.19 CARAT**
Color Grade **FANCY INTENSE YELLOW**
Clarity Grade **VS 1**
Depth **49.5%**
Table **13%**
Girdle **Slightly Thick To Thick**
Culet **Pointed**
Polish **EXCELLENT**
Symmetry **EXCELLENT**
Fluorescence **NONE**
Inscription(s) **IGI LG782623373**

Comments: This Laboratory Grown Diamond was created by Chemical Vapor Deposition (CVD) growth process.