



ELECTRONIC COPY

LG782622804
Report verification at igi.org



March 26, 2026

IGI Report Number **LG782622804**

Description **LABORATORY GROWN DIAMOND**

Shape and Cutting Style **HEART BRILLIANT**

Measurements **7.56 X 8.01 X 4.73 MM**

GRADING RESULTS

Carat Weight **1.60 CARAT**

Color Grade **FANCY VIVID BLUE**

Clarity Grade **SI 2**

March 26, 2026
IGI Report Number **LG782622804**
Description **LABORATORY GROWN DIAMOND**
Shape and Cutting Style **HEART BRILLIANT**
Measurements **7.56 X 8.01 X 4.73 MM**

GRADING RESULTS

Carat Weight **1.60 CARAT**

Color Grade **FANCY VIVID BLUE**

Clarity Grade **SI 2**

ADDITIONAL GRADING INFORMATION

Polish **EXCELLENT**

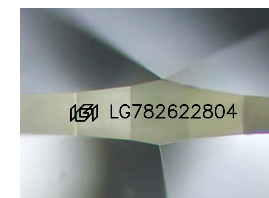
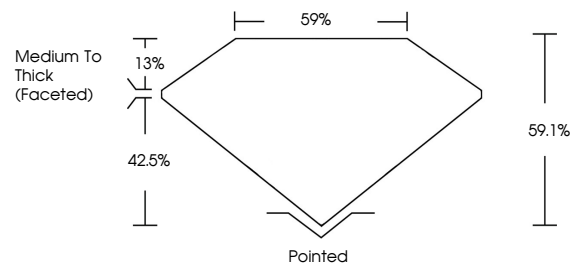
Symmetry **EXCELLENT**

Fluorescence **NONE**

Inscription(s) **IGI LG782622804**

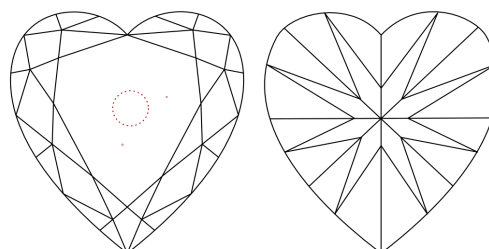
Comments: This Laboratory Grown Diamond was created by Chemical Vapor Deposition (CVD) growth process.
Indications of post-growth treatment.

PROPORTIONS



Sample Image Used

CLARITY CHARACTERISTICS



KEY TO SYMBOLS

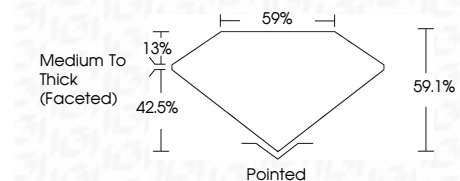
Red symbols indicate internal characteristics.
Green symbols indicate external characteristics.

COLOR

D E F G H I J Faint Very Light Light

CLARITY

FL	IF	VS ¹⁻²	VS ¹⁻²	SI ¹⁻²	I ¹⁻³
Flawless	Internally Flawless	Very Very Slightly Included	Very Slightly Included	Slightly Included	Included



ADDITIONAL GRADING INFORMATION

Polish **EXCELLENT**

Symmetry **EXCELLENT**

Fluorescence **NONE**

Inscription(s) **IGI LG782622804**

Comments: This Laboratory Grown Diamond was created by Chemical Vapor Deposition (CVD) growth process.
Indications of post-growth treatment.



IGI



March 26, 2026
IGI Report No LG782622804
HEART BRILLIANT

1.60 CARAT
Carat Weight
FANCY VIVID BLUE
Color Grade

SI 2
Clarity Grade
69.1%
Table
59%
Depth
Medium To Thick (Faceted)
Girdle
Pointed
Culet
EXCELLENT
Polish
EXCELLENT
Symmetry
NONE
Fluorescence
IGI LG782622804
Inscription(s)

Comments: This Laboratory Grown Diamond was created by Chemical Vapor Deposition (CVD) growth process.
Indications of post-growth treatment.