



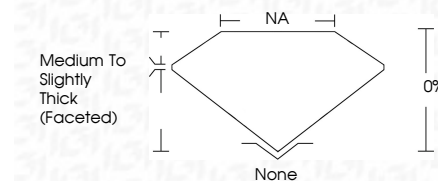
**ELECTRONIC COPY**

LG782622119  
Report verification at igi.org



March 19, 2026  
IGI Report Number **LG782622119**  
Description **LABORATORY GROWN DIAMOND**  
Shape and Cutting Style **ROUND ROSE CUT**  
Measurements **16.77 - 16.89 X 1.46 MM**

**GRADING RESULTS**  
Carat Weight **4.09 CARATS**  
Color Grade **H**  
Clarity Grade **VS 2**

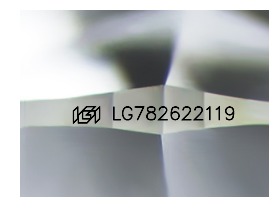


**ADDITIONAL GRADING INFORMATION**  
Polish **VERY GOOD**  
Symmetry **GOOD**  
Fluorescence **NONE**  
Inscription(s) **IGI LG782622119**  
Comments: This Laboratory Grown Diamond was created by Chemical Vapor Deposition (CVD) growth process. Type IIa



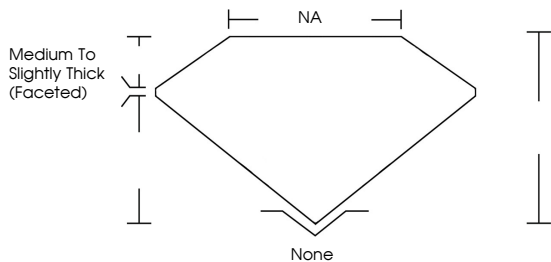
March 19, 2026  
IGI Report No LG782622119  
**ROUND ROSE CUT**  
16.77 - 16.89 X 1.46 MM  
Carat Weight **4.09 CARATS**  
Color Grade **H**  
Clarity Grade **VS 2**  
Depth **0%**  
Table **NA**  
Girdle **Medium to Slightly Thick (Faceted)**  
Culet **None**  
Polish **VERY GOOD**  
Symmetry **GOOD**  
Fluorescence **NONE**  
Inscription(s) **IGI LG782622119**

Comments: This Laboratory Grown Diamond was created by Chemical Vapor Deposition (CVD) growth process. Type IIa

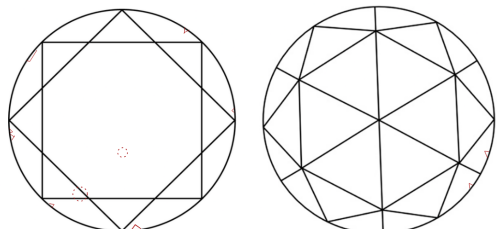


Sample Image Used

**PROPORTIONS**



**CLARITY CHARACTERISTICS**



**KEY TO SYMBOLS**  
Red symbols indicate internal characteristics.  
Green symbols indicate external characteristics.

**COLOR**

D	E	F	G	H	I	J	Faint	Very Light	Light
---	---	---	---	---	---	---	-------	------------	-------

**CLARITY**

FL	IF	VS <sup>1-2</sup>	VS <sup>1-2</sup>	SI <sup>1-2</sup>	I <sup>1-3</sup>
Flawless	Internally Flawless	Very Very Slightly Included	Very Slightly Included	Slightly Included	Included



March 19, 2026  
IGI Report No LG782622119  
**ROUND ROSE CUT**  
16.77 - 16.89 X 1.46 MM  
Carat Weight **4.09 CARATS**  
Color Grade **H**  
Clarity Grade **VS 2**  
Depth **0%**  
Table **NA**  
Girdle **Medium to Slightly Thick (Faceted)**  
Culet **None**  
Polish **VERY GOOD**  
Symmetry **GOOD**  
Fluorescence **NONE**  
Inscription(s) **IGI LG782622119**

Comments: This Laboratory Grown Diamond was created by Chemical Vapor Deposition (CVD) growth process. Type IIa