



ELECTRONIC COPY

LG782621883
Report verification at igi.org



March 12, 2026

IGI Report Number **LG782621883**

Description **LABORATORY GROWN DIAMOND**

Shape and Cutting Style **EMERALD CUT**

Measurements **14.85 X 9.91 X 6.61 MM**

GRADING RESULTS

Carat Weight **10.08 CARATS**

Color Grade **FANCY VIVID PINK**

Clarity Grade **VS 1**

March 12, 2026
IGI Report Number **LG782621883**
Description **LABORATORY GROWN DIAMOND**
Shape and Cutting Style **EMERALD CUT**
Measurements **14.85 X 9.91 X 6.61 MM**

GRADING RESULTS

Carat Weight **10.08 CARATS**

Color Grade **FANCY VIVID PINK**

Clarity Grade **VS 1**

ADDITIONAL GRADING INFORMATION

Polish **EXCELLENT**

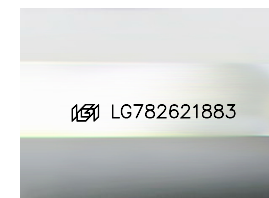
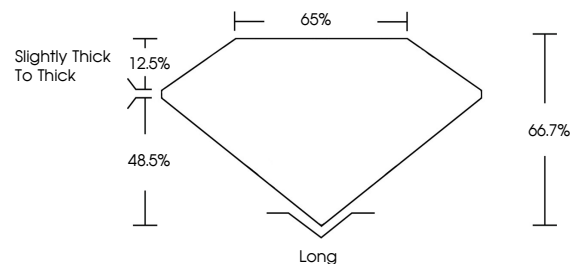
Symmetry **EXCELLENT**

Fluorescence **SLIGHT**

Inscription(s) **LG782621883**

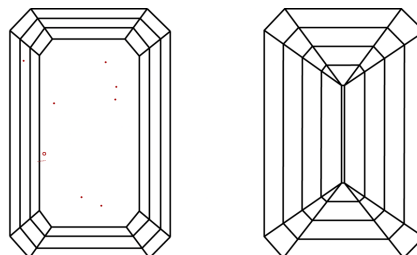
Comments: This Laboratory Grown Diamond was created by Chemical Vapor Deposition (CVD) growth process.
Indications of post-growth treatment.

PROPORTIONS



Sample Image Used

CLARITY CHARACTERISTICS



KEY TO SYMBOLS

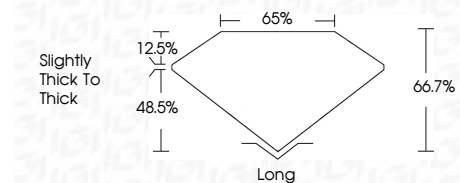
Red symbols indicate internal characteristics.
Green symbols indicate external characteristics.

COLOR

D E F G H I J Faint Very Light Light

CLARITY

FL	IF	VS ¹⁻²	VS ¹⁻²	SI ¹⁻²	I ¹⁻³
Flawless	Internally Flawless	Very Very Slightly Included	Very Slightly Included	Slightly Included	Included



ADDITIONAL GRADING INFORMATION

Polish **EXCELLENT**

Symmetry **EXCELLENT**

Fluorescence **SLIGHT**

Inscription(s) **LG782621883**

Comments: This Laboratory Grown Diamond was created by Chemical Vapor Deposition (CVD) growth process.
Indications of post-growth treatment.



IGI



March 12, 2026
IGI Report No **LG782621883**
EMERALD CUT

10.08 CARATS
Carat Weight
FANCY VIVID PINK
Color Grade

VS 1
Clarity Grade
66.7%
Depth
65%
Table
Slightly thick to thick
Girdle

Long
Culet
EXCELLENT
Polish
EXCELLENT
Symmetry
SLIGHT
Fluorescence
IGI LG782621883
Inscription(s)

Comments: This Laboratory Grown Diamond was created by Chemical Vapor Deposition (CVD) growth process.
Indications of post-growth treatment.