



ELECTRONIC COPY

LG782620539
Report verification at igi.org



March 23, 2026
IGI Report Number **LG782620539**
Description **LABORATORY GROWN DIAMOND**
Shape and Cutting Style **CUT CORNERED
RECTANGULAR MODIFIED
BRILLIANT**
Measurements **9.93 X 7.04 X 4.70 MM**
GRADING RESULTS
Carat Weight **3.17 CARATS**
Color Grade **FANCY VIVID PINK**
Clarity Grade **VS 1**

March 23, 2026
IGI Report Number **LG782620539**
Description **LABORATORY GROWN DIAMOND**
Shape and Cutting Style **CUT CORNERED RECTANGULAR
MODIFIED BRILLIANT**
Measurements **9.93 X 7.04 X 4.70 MM**

GRADING RESULTS

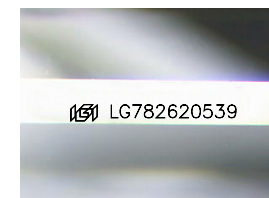
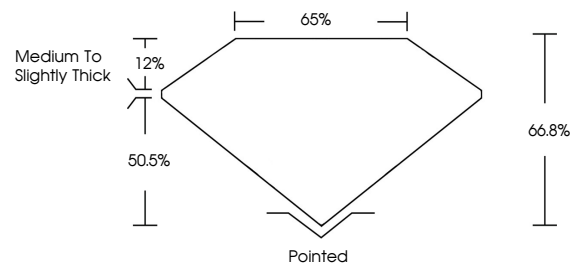
Carat Weight **3.17 CARATS**
Color Grade **FANCY VIVID PINK**
Clarity Grade **VS 1**

ADDITIONAL GRADING INFORMATION

Polish **EXCELLENT**
Symmetry **EXCELLENT**
Fluorescence **STRONG**
Inscription(s) **IGI LG782620539**

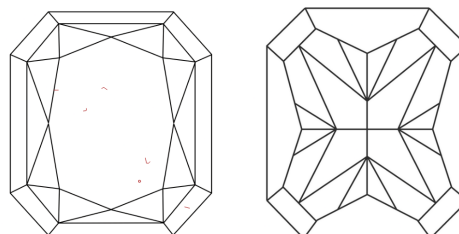
Comments: This Laboratory Grown Diamond was created by Chemical Vapor Deposition (CVD) growth process. Indications of post-growth treatment.

PROPORTIONS



Sample Image Used

CLARITY CHARACTERISTICS



KEY TO SYMBOLS

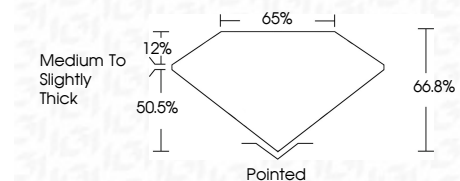
Red symbols indicate internal characteristics.
Green symbols indicate external characteristics.

COLOR

D E F G H I J Faint Very Light Light

CLARITY

FL	IF	VS ¹⁻²	VS ¹⁻²	SI ¹⁻²	I ¹⁻³
Flawless	Internally Flawless	Very Very Slightly Included	Very Slightly Included	Slightly Included	Included



ADDITIONAL GRADING INFORMATION

Polish **EXCELLENT**
Symmetry **EXCELLENT**
Fluorescence **STRONG**
Inscription(s) **IGI LG782620539**
Comments: This Laboratory Grown Diamond was created by Chemical Vapor Deposition (CVD) growth process. Indications of post-growth treatment.



IGI



March 23, 2026
IGI Report No LG782620539
CUT CORNERED RECT. MODIFIED BRILLIANT
9.93 X 7.04 X 4.70 MM
3.17 CARATS
FANCY VIVID PINK
VS 1
66.8%
50.5%
Medium to Slightly Thick
Pointed
EXCELLENT
EXCELLENT
STRONG
IGI LG782620539
Comments: This Laboratory Grown Diamond was created by Chemical Vapor Deposition (CVD) growth process. Indications of post-growth treatment.