



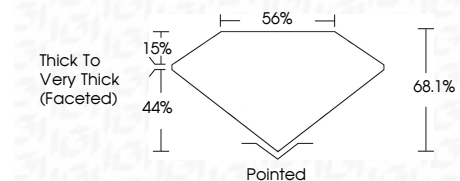
**ELECTRONIC COPY**

LG782620414  
Report verification at igi.org



March 23, 2026  
IGI Report Number **LG782620414**  
Description **LABORATORY GROWN DIAMOND**  
Shape and Cutting Style **SQUARE CUSHION MODIFIED  
BRILLIANT**  
Measurements **6.92 X 6.92 X 4.71 MM**

**GRADING RESULTS**  
Carat Weight **2.03 CARATS**  
Color Grade **FANCY VIVID PINK**  
Clarity Grade **VVS 2**



**ADDITIONAL GRADING INFORMATION**  
Polish **EXCELLENT**  
Symmetry **EXCELLENT**  
Fluorescence **SLIGHT**  
Inscription(s) **IGI LG782620414**  
Comments: This Laboratory Grown Diamond was created by Chemical Vapor Deposition (CVD) growth process. Indications of post-growth treatment.



March 23, 2026  
IGI Report No **LG782620414**  
**SQUARE CUSHION MODIFIED BRILLIANT**  
**6.92 X 6.92 X 4.71 MM**  
Carat Weight **2.03 CARATS**  
Color Grade **FANCY VIVID PINK**  
Clarity Grade **VVS 2**  
Depth **68.1%**  
Table **44%**  
Girdle **Thick to Very Thick (Faceted)**  
Culet **Pointed**  
Polish **EXCELLENT**  
Symmetry **EXCELLENT**  
Fluorescence **SLIGHT**  
Inscription(s) **IGI LG782620414**  
Comments: This Laboratory Grown Diamond was created by Chemical Vapor Deposition (CVD) growth process. Indications of post-growth treatment.

**LABORATORY GROWN DIAMOND REPORT**

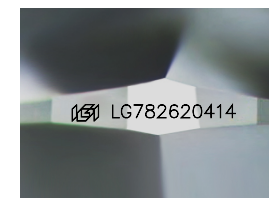
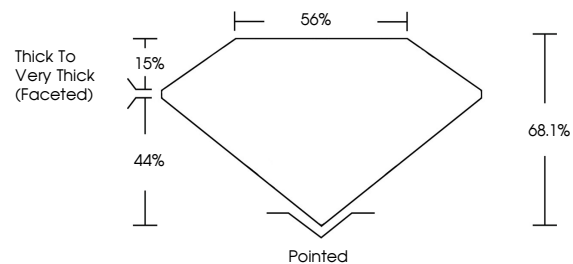
March 23, 2026  
IGI Report Number **LG782620414**  
Description **LABORATORY GROWN DIAMOND**  
Shape and Cutting Style **SQUARE CUSHION MODIFIED  
BRILLIANT**  
Measurements **6.92 X 6.92 X 4.71 MM**

**GRADING RESULTS**  
Carat Weight **2.03 CARATS**  
Color Grade **FANCY VIVID PINK**  
Clarity Grade **VVS 2**

**ADDITIONAL GRADING INFORMATION**  
Polish **EXCELLENT**  
Symmetry **EXCELLENT**  
Fluorescence **SLIGHT**  
Inscription(s) **IGI LG782620414**

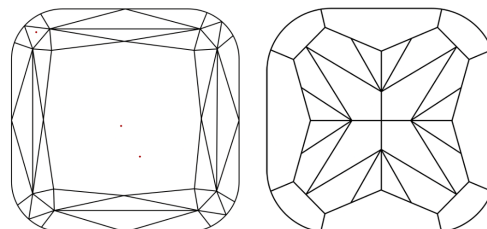
Comments: This Laboratory Grown Diamond was created by Chemical Vapor Deposition (CVD) growth process. Indications of post-growth treatment.

**PROPORTIONS**



Sample Image Used

**CLARITY CHARACTERISTICS**



**KEY TO SYMBOLS**

Red symbols indicate internal characteristics.  
Green symbols indicate external characteristics.

**COLOR**

D E F G H I J Faint Very Light Light

**CLARITY**

FL	IF	VVS <sup>1-2</sup>	VS <sup>1-2</sup>	SI <sup>1-2</sup>	I <sup>1-3</sup>
Flawless	Internally Flawless	Very Very Slightly Included	Very Slightly Included	Slightly Included	Included

