



**ELECTRONIC COPY**

LG782620148  
Report verification at igi.org



March 24, 2026

IGI Report Number **LG782620148**

Description **LABORATORY GROWN DIAMOND**

Shape and Cutting Style **ROUND MODIFIED BRILLIANT**

Measurements **6.87 - 6.87 X 4.28 MM**

**GRADING RESULTS**

Carat Weight **1.35 CARAT**

Color Grade **FANCY INTENSE PINK**

Clarity Grade **VVS 2**

March 24, 2026  
IGI Report Number **LG782620148**  
Description **LABORATORY GROWN DIAMOND**  
Shape and Cutting Style **ROUND MODIFIED BRILLIANT**  
Measurements **6.87 - 6.87 X 4.28 MM**

**GRADING RESULTS**

Carat Weight **1.35 CARAT**

Color Grade **FANCY INTENSE PINK**

Clarity Grade **VVS 2**

**ADDITIONAL GRADING INFORMATION**

Polish **EXCELLENT**

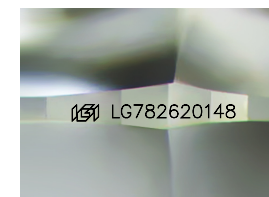
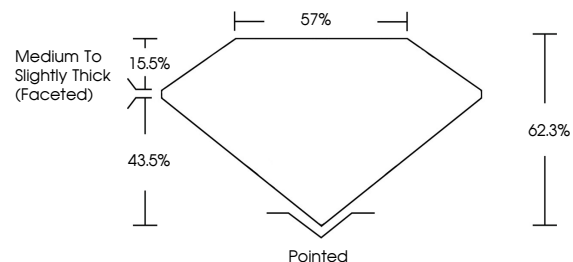
Symmetry **EXCELLENT**

Fluorescence **SLIGHT**

Inscription(s) **LG782620148**

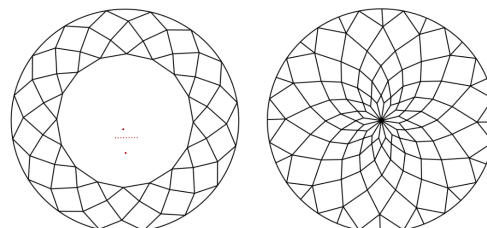
Comments: This Laboratory Grown Diamond was created by Chemical Vapor Deposition (CVD) growth process. Indications of post-growth treatment.

**PROPORTIONS**



Sample Image Used

**CLARITY CHARACTERISTICS**



**KEY TO SYMBOLS**

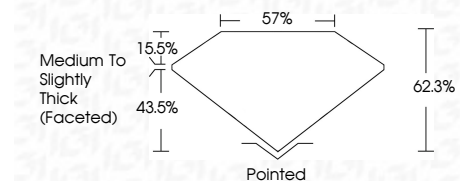
Red symbols indicate internal characteristics.  
Green symbols indicate external characteristics.

**COLOR**

D E F G H I J Faint Very Light Light

**CLARITY**

| FL       | IF                  | VVS <sup>1-2</sup>          | VS <sup>1-2</sup>      | SI <sup>1-2</sup> | I <sup>1-3</sup> |
|----------|---------------------|-----------------------------|------------------------|-------------------|------------------|
| Flawless | Internally Flawless | Very Very Slightly Included | Very Slightly Included | Slightly Included | Included         |



**ADDITIONAL GRADING INFORMATION**

Polish **EXCELLENT**

Symmetry **EXCELLENT**

Fluorescence **SLIGHT**

Inscription(s) **LG782620148**

Comments: This Laboratory Grown Diamond was created by Chemical Vapor Deposition (CVD) growth process. Indications of post-growth treatment.



March 24, 2026  
IGI Report No **LG782620148**  
**ROUND MODIFIED BRILLIANT**  
**6.87 - 6.87 X 4.28 MM**  
Carat Weight **1.35 CARAT**  
Color Grade **FANCY INTENSE PINK**  
Clarity Grade **VVS 2**  
Depth **43.5%**  
Table **15.5%**  
Girdle **Medium to Slightly Thick (Faceted)**  
Culet **Pointed**  
Polish **EXCELLENT**  
Symmetry **EXCELLENT**  
Fluorescence **SLIGHT**  
Inscription(s) **LG782620148**  
Comments: This Laboratory Grown Diamond was created by Chemical Vapor Deposition (CVD) growth process. Indications of post-growth treatment.