



ELECTRONIC COPY

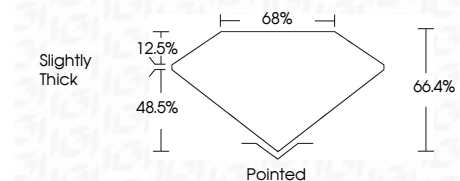
LG782619845
Report verification at igi.org



March 18, 2026
IGI Report Number **LG782619845**
Description **LABORATORY GROWN DIAMOND**
Shape and Cutting Style **CUT CORNERED
RECTANGULAR MODIFIED
BRILLIANT**
Measurements **8.70 X 6.43 X 4.27 MM**

GRADING RESULTS

Carat Weight **2.28 CARATS**
Color Grade **FANCY INTENSE YELLOW**
Clarity Grade **VS 1**



ADDITIONAL GRADING INFORMATION

Polish **VERY GOOD**
Symmetry **VERY GOOD**
Fluorescence **NONE**
Inscription(s) **IGI LG782619845**
Comments: This Laboratory Grown Diamond was created by Chemical Vapor Deposition (CVD) growth process.



March 18, 2026
IGI Report No LG782619845
CUT CORNERED RECT. MODIFIED BRILLIANT
8.70 X 6.43 X 4.27 MM
2.28 CARATS
FANCY INTENSE YELLOW
VS 1
66.4%
48.5%
Slightly Thick
Pointed
VERY GOOD
VERY GOOD
NONE
IGI LG782619845
Comments: This Laboratory Grown Diamond was created by Chemical Vapor Deposition (CVD) growth process.

LABORATORY GROWN DIAMOND REPORT

March 18, 2026
IGI Report Number **LG782619845**
Description **LABORATORY GROWN DIAMOND**
Shape and Cutting Style **CUT CORNERED RECTANGULAR
MODIFIED BRILLIANT**
Measurements **8.70 X 6.43 X 4.27 MM**

GRADING RESULTS

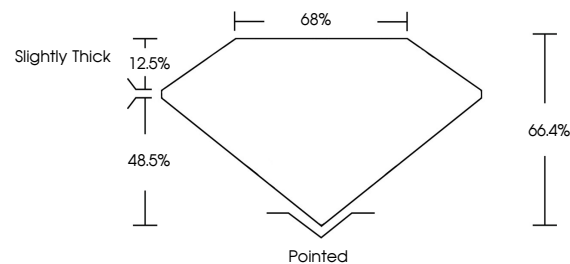
Carat Weight **2.28 CARATS**
Color Grade **FANCY INTENSE YELLOW**
Clarity Grade **VS 1**

ADDITIONAL GRADING INFORMATION

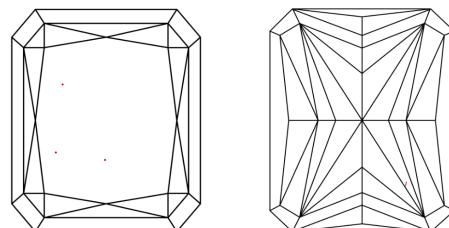
Polish **VERY GOOD**
Symmetry **VERY GOOD**
Fluorescence **NONE**
Inscription(s) **IGI LG782619845**

Comments: This Laboratory Grown Diamond was created by Chemical Vapor Deposition (CVD) growth process.

PROPORTIONS

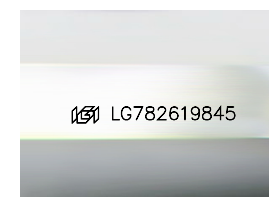


CLARITY CHARACTERISTICS



KEY TO SYMBOLS

Red symbols indicate internal characteristics.
Green symbols indicate external characteristics.



Sample Image Used

COLOR

D E F G H I J Faint Very Light Light

CLARITY

FL	IF	VS ¹⁻²	VS ¹⁻²	SI ¹⁻²	I ¹⁻³
Flawless	Internally Flawless	Very Very Slightly Included	Very Slightly Included	Slightly Included	Included

