



ELECTRONIC COPY

LG782619131 Report verification at igi.org



March 20, 2026 IGI Report Number LG782619131 Description LABORATORY GROWN DIAMOND Shape and Cutting Style ROUND BRILLIANT Measurements 7.31 - 7.34 X 4.57 MM GRADING RESULTS Carat Weight 1.51 CARAT Color Grade D Clarity Grade INTERNALLY FLAWLESS Cut Grade IDEAL

March 20, 2026 IGI Report Number LG782619131 Description LABORATORY GROWN DIAMOND Shape and Cutting Style ROUND BRILLIANT Measurements 7.31 - 7.34 X 4.57 MM

GRADING RESULTS

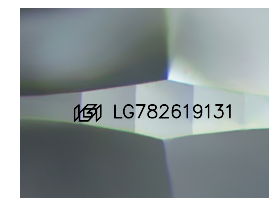
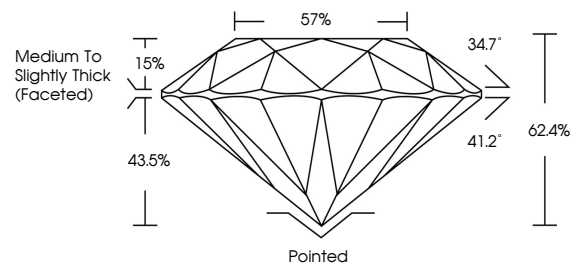
Carat Weight 1.51 CARAT Color Grade D Clarity Grade INTERNALLY FLAWLESS Cut Grade IDEAL

ADDITIONAL GRADING INFORMATION

Polish EXCELLENT Symmetry EXCELLENT Fluorescence NONE Inscription(s) IGI LG782619131

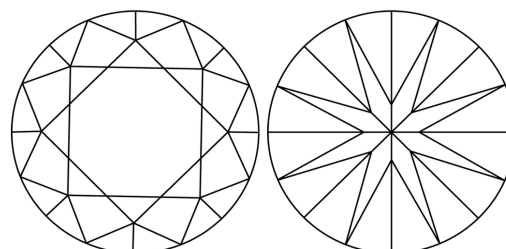
Comments: As Grown - No indication of post-growth treatment. This Laboratory Grown Diamond was created by High Pressure High Temperature (HPHT) growth process. Type II

PROPORTIONS



Sample Image Used

CLARITY CHARACTERISTICS



KEY TO SYMBOLS

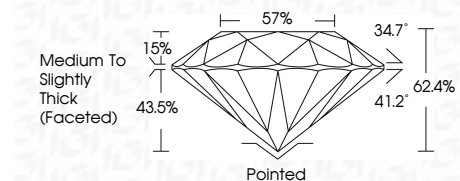
Red symbols indicate internal characteristics. Green symbols indicate external characteristics.

COLOR

D E F G H I J Faint Very Light Light

CLARITY

FL IF VS 1-2 VS 1-2 SI 1-2 I 1-3 Flawless Internally Flawless Very Very Slightly Included Very Slightly Included Slightly Included Included



ADDITIONAL GRADING INFORMATION

Polish EXCELLENT Symmetry EXCELLENT Fluorescence NONE Inscription(s) IGI LG782619131 Comments: As Grown - No indication of post-growth treatment. This Laboratory Grown Diamond was created by High Pressure High Temperature (HPHT) growth process. Type II



Summary table of report details: March 20, 2026, IGI Report No LG782619131, ROUND BRILLIANT, 1.51 CARAT, D, IF, IDEAL, 62.4%, 57%, Medium To Slightly Thick (Faceted), Pointed, EXCELLENT, EXCELLENT, NONE, IGI LG782619131. Comments: As Grown - No indication of post-growth treatment. This Laboratory Grown Diamond was created by High Pressure High Temperature (HPHT) growth process. Type II