



**ELECTRONIC COPY**

LG782619013  
Report verification at igi.org



March 23, 2026  
IGI Report Number **LG782619013**  
Description **LABORATORY GROWN DIAMOND**  
Shape and Cutting Style **CUT CORNERED  
RECTANGULAR MIXED CUT**  
Measurements **10.60 X 7.26 X 5.26 MM**  
**GRADING RESULTS**  
Carat Weight **4.02 CARATS**  
Color Grade **F**  
Clarity Grade **VVS 2**

March 23, 2026  
IGI Report Number **LG782619013**  
Description **LABORATORY GROWN DIAMOND**  
Shape and Cutting Style **CUT CORNERED RECTANGULAR  
MIXED CUT**  
Measurements **10.60 X 7.26 X 5.26 MM**

**GRADING RESULTS**

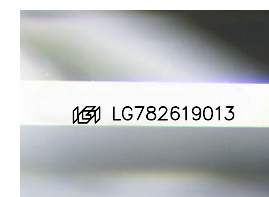
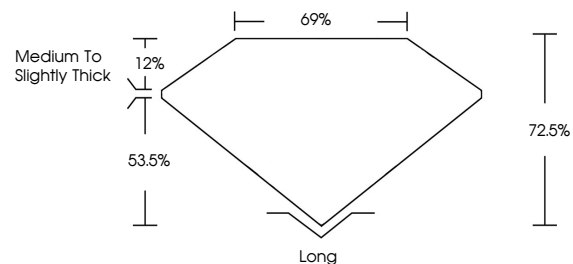
Carat Weight **4.02 CARATS**  
Color Grade **F**  
Clarity Grade **VVS 2**

**ADDITIONAL GRADING INFORMATION**

Polish **EXCELLENT**  
Symmetry **VERY GOOD**  
Fluorescence **NONE**  
Inscription(s) **IGI LG782619013**

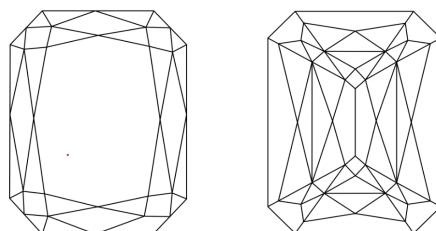
Comments: This Laboratory Grown Diamond was created by Chemical Vapor Deposition (CVD) growth process. Type IIa

**PROPORTIONS**



Sample Image Used

**CLARITY CHARACTERISTICS**



**KEY TO SYMBOLS**

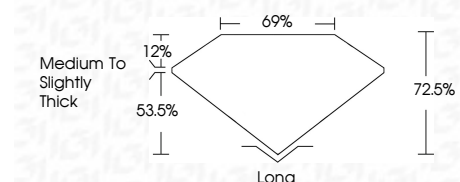
Red symbols indicate internal characteristics.  
Green symbols indicate external characteristics.

**COLOR**

D E F G H I J Faint Very Light Light

**CLARITY**

FL	IF	VVS <sup>1-2</sup>	VS <sup>1-2</sup>	SI <sup>1-2</sup>	I <sup>1-3</sup>
Flawless	Internally Flawless	Very Very Slightly Included	Very Slightly Included	Slightly Included	Included



**ADDITIONAL GRADING INFORMATION**

Polish **EXCELLENT**  
Symmetry **VERY GOOD**  
Fluorescence **NONE**  
Inscription(s) **IGI LG782619013**  
Comments: This Laboratory Grown Diamond was created by Chemical Vapor Deposition (CVD) growth process. Type IIa



March 23, 2026  
IGI Report No LG782619013  
CUT CORNERED RECT. MIXED CUT  
4.02 CARATS  
F  
4.02 CARATS  
VVS 2  
72.5%  
69%  
Medium to Slightly Thick  
Long  
EXCELLENT  
VERY GOOD  
NONE  
IGI LG782619013  
Comments: This Laboratory Grown Diamond was created by Chemical Vapor Deposition (CVD) growth process. Type IIa