



ELECTRONIC COPY

LG782618704
Report verification at igi.org



March 19, 2026
IGI Report Number **LG782618704**

Description **LABORATORY GROWN DIAMOND**

Shape and Cutting Style **ROUND MODIFIED BRILLIANT**

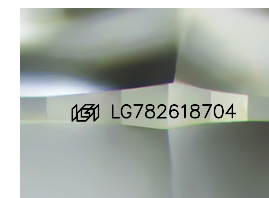
Measurements **9.23 - 9.27 X 5.67 MM**

GRADING RESULTS

Carat Weight **3.02 CARATS**

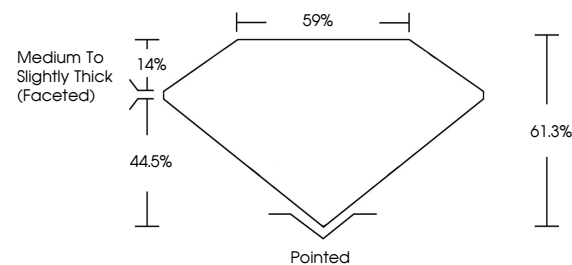
Color Grade **FANCY INTENSE PINK**

Clarity Grade **VVS 2**

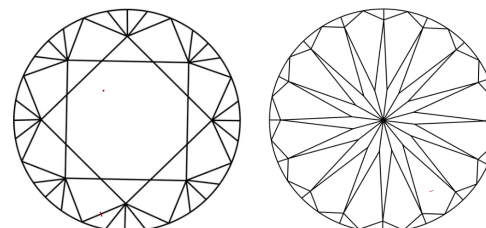


Sample Image Used

PROPORTIONS



CLARITY CHARACTERISTICS



KEY TO SYMBOLS

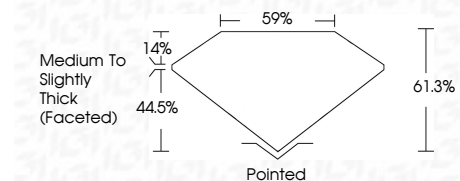
Red symbols indicate internal characteristics.
Green symbols indicate external characteristics.

COLOR

D E F G H I J Faint Very Light Light

CLARITY

FL	IF	VS ¹⁻²	VS ¹⁻²	SI ¹⁻²	I ¹⁻³
Flawless	Internally Flawless	Very Very Slightly Included	Very Slightly Included	Slightly Included	Included



ADDITIONAL GRADING INFORMATION

Polish **EXCELLENT**

Symmetry **EXCELLENT**

Fluorescence **SLIGHT**

Inscription(s) **IGI LG782618704**

Comments: This Laboratory Grown Diamond was created by Chemical Vapor Deposition (CVD) growth process. Indications of post-growth treatment.



March 19, 2026
IGI Report No LG782618704
ROUND MODIFIED BRILLIANT
9.23 - 9.27 X 5.67 MM
3.02 CARATS
FANCY INTENSE PINK
VVS 2
61.0%
59%
Medium to Slightly Thick (Faceted)
Pointed
EXCELLENT
EXCELLENT
SLIGHT
IGI LG782618704
Comments: This Laboratory Grown Diamond was created by Chemical Vapor Deposition (CVD) growth process. Indications of post-growth treatment.