



ELECTRONIC COPY

LG782617681
Report verification at igi.org



March 14, 2026
IGI Report Number **LG782617681**
Description **LABORATORY GROWN DIAMOND**
Shape and Cutting Style **OCTAGONAL MODIFIED BRILLIANT**
Measurements **8.07 X 8.17 X 5.00 MM**
GRADING RESULTS
Carat Weight **2.01 CARATS**
Color Grade **E**
Clarity Grade **VS 1**

LABORATORY GROWN DIAMOND REPORT

March 14, 2026
IGI Report Number **LG782617681**
Description **LABORATORY GROWN DIAMOND**
Shape and Cutting Style **OCTAGONAL MODIFIED BRILLIANT**
Measurements **8.07 X 8.17 X 5.00 MM**

GRADING RESULTS

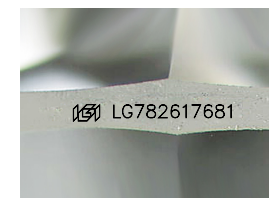
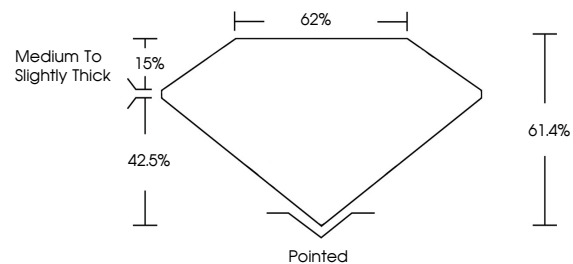
Carat Weight **2.01 CARATS**
Color Grade **E**
Clarity Grade **VS 1**

ADDITIONAL GRADING INFORMATION

Polish **EXCELLENT**
Symmetry **EXCELLENT**
Fluorescence **NONE**
Inscription(s) **IGI LG782617681**

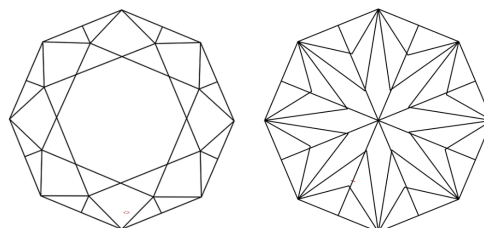
Comments: This Laboratory Grown Diamond was created by Chemical Vapor Deposition (CVD) growth process.
Type IIa

PROPORTIONS



Sample Image Used

CLARITY CHARACTERISTICS



KEY TO SYMBOLS

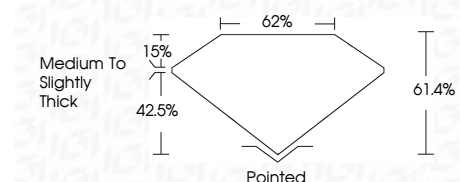
Red symbols indicate internal characteristics.
Green symbols indicate external characteristics.

COLOR

D E F G H I J Faint Very Light Light

CLARITY

FL	IF	VS ¹⁻²	VS ¹⁻²	SI ¹⁻²	I ¹⁻³
Flawless	Internally Flawless	Very Very Slightly Included	Very Slightly Included	Slightly Included	Included



ADDITIONAL GRADING INFORMATION

Polish **EXCELLENT**
Symmetry **EXCELLENT**
Fluorescence **NONE**
Inscription(s) **IGI LG782617681**
Comments: This Laboratory Grown Diamond was created by Chemical Vapor Deposition (CVD) growth process.
Type IIa



March 14, 2026
IGI Report No. LG782617681
OCTAGONAL MODIFIED BRILLIANT
8.07 X 8.17 X 5.00 MM
2.01 CARATS
E
61.4%
62%
Medium to Slightly Thick
Pointed
EXCELLENT
EXCELLENT
NONE
IGI LG782617681
Comments: This Laboratory Grown Diamond was created by Chemical Vapor Deposition (CVD) growth process.
Type IIa