



ELECTRONIC COPY

LG782610406 Report verification at igi.org



March 10, 2026 IGI Report Number LG782610406 Description LABORATORY GROWN DIAMOND Shape and Cutting Style PRINCESS CUT Measurements 6.91 X 6.91 X 4.92 MM GRADING RESULTS Carat Weight 2.05 CARATS Color Grade F Clarity Grade VVS 2

LABORATORY GROWN DIAMOND REPORT

March 10, 2026 IGI Report Number LG782610406 Description LABORATORY GROWN DIAMOND Shape and Cutting Style PRINCESS CUT Measurements 6.91 X 6.91 X 4.92 MM

GRADING RESULTS

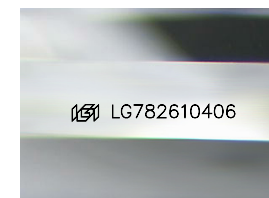
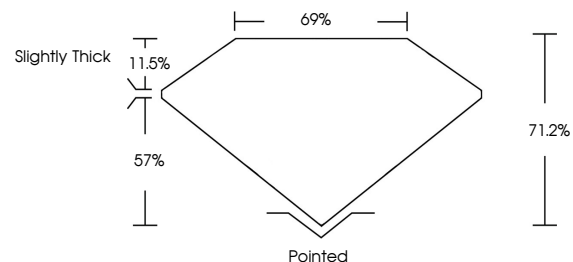
Carat Weight 2.05 CARATS Color Grade F Clarity Grade VVS 2

ADDITIONAL GRADING INFORMATION

Polish EXCELLENT Symmetry EXCELLENT Fluorescence NONE Inscription(s) IGI LG782610406

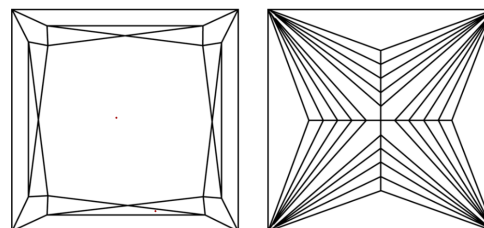
Comments: This Laboratory Grown Diamond was created by Chemical Vapor Deposition (CVD) growth process. Type IIa

PROPORTIONS



Sample Image Used

CLARITY CHARACTERISTICS



KEY TO SYMBOLS

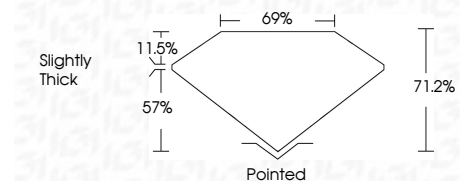
Red symbols indicate internal characteristics. Green symbols indicate external characteristics.

COLOR

D E F G H I J Faint Very Light Light

CLARITY

FL IF VS 1-2 VS 1-2 SI 1-2 I 1-3 Flawless Internally Flawless Very Very Slightly Included Very Slightly Included Slightly Included Included



ADDITIONAL GRADING INFORMATION

Polish EXCELLENT Symmetry EXCELLENT Fluorescence NONE Inscription(s) IGI LG782610406 Comments: This Laboratory Grown Diamond was created by Chemical Vapor Deposition (CVD) growth process. Type IIa



Summary of report details including date, report number, description, measurements, grading results, and additional information.